

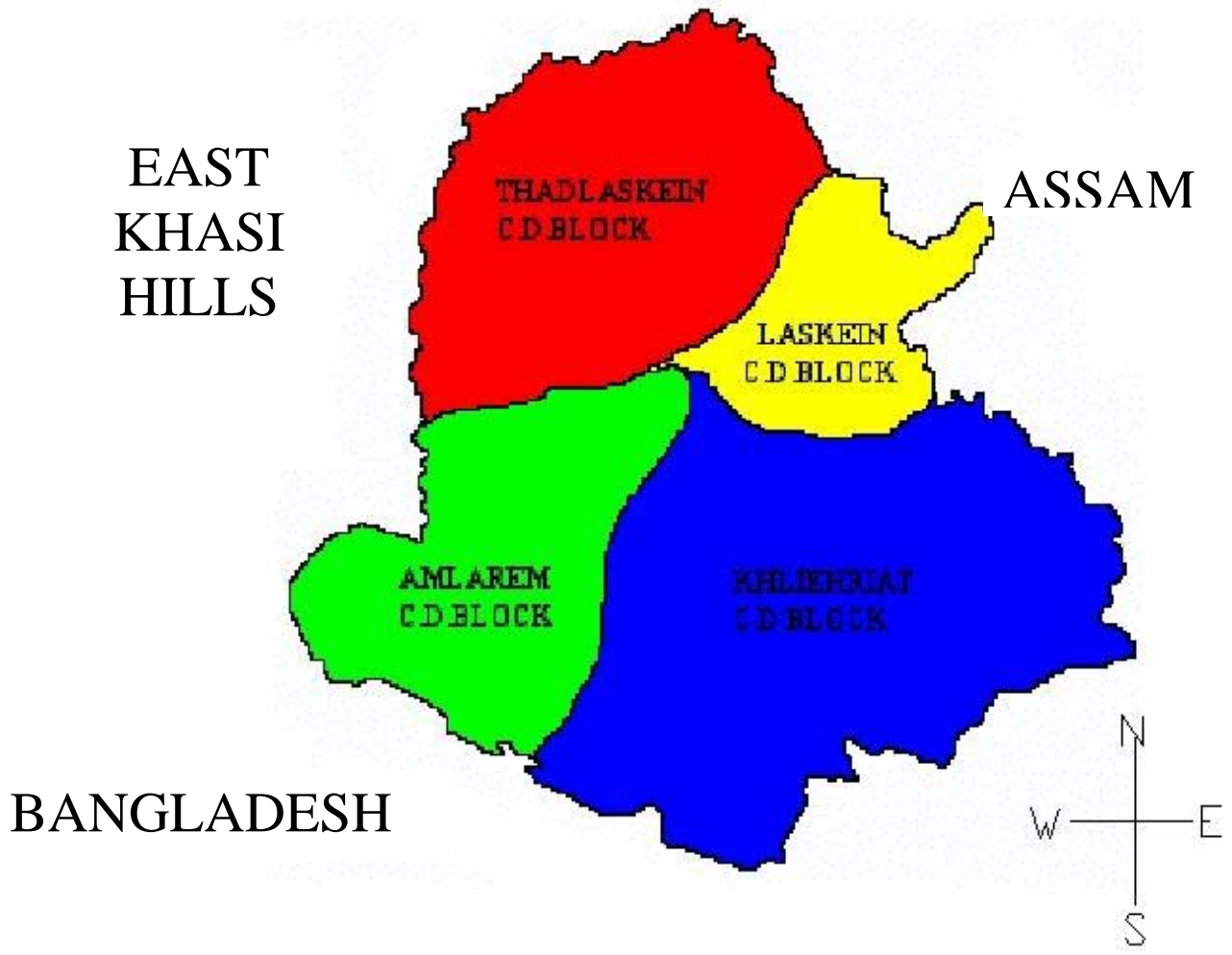
PREFACE

The publication of District Statistical Handbook 2008 is the tenth in its series brought out by the office of the District Statistical Officer, Jowai under the Guidance of the Directorate of Economics and Statistics, Meghalaya Shillong. The Handbook seeks to provide statistical information on socio-economic aspect of the District based on currently available data for the interested individuals, policy makers, planners, research scholars and other users.

The co-operation extended by various Government Departments in providing the required information for this Publication is gratefully acknowledged. It has always been our endeavour to improve the publication. Hence, suggestions / comments regarding the contents as well as presentation of the data in this publication are most welcome.

Dated:

(K. Nongkynrih)
District Statistical Officer,
Jaintia Hills District,
Jowai.



Jaintia Hills

CONVERSION TABLE

WEIGHTS

1 Grain	=	0.065 Grams
1 Gram	=	0.03570 Ounces
	=	0.085735 Tolas
1 Ounce	=	28.350 Grams
1 Pound	=	0.4536 Kilograms
1 Kilogram	=	2.20462 Pounds
1 Quintal	=	100 Kilograms
1 Tonne	=	10 Quintals
	=	0.98420 Tons
1 Ton	=	1.01605 Tonnes
	=	0.508024 Quintals
1 Cwt	=	50.802 Kilograms

LENGTH

1 Centimetre	=	0.393701 Inches
1 Inch	=	25.4 Millimetres
	=	0.0254 Metres
1 Foot	=	0.3048 Metres
	=	3048 Centimetres
1 Metre	=	1.09361 Yards
1 Yard	=	0.0144 Metres
1 Mile	=	1.609344 Kilometres
1 Kilometre	=	0.62137 Miles

CAPACITY AND VOLUME

1 Gallon (Imperial)	=	4.54596 Litres
1 Gallon (U.S.)	=	3.78533 Litres
	=	0.83268 Gallons (Imperial)
1 Litre	=	0.219967 Gallons (Imperial)
1 Cubic Foot	=	28.3168 Cubic Decimetres
	=	0.028 Cubic Metres
1 Cubic Metre	=	1.30795 Cubic Yards
1 Cubic Yard	=	0.76455 Cubic Metres

AREA

1 Square Inch	=	6.4516 Square Centimetres
1 Square Foot	=	0.092903 Square Metres
1 Square Yard	=	0.836131 Square Metres
1 Square Metre	=	1.19599 Square Yards
1 Acre	=	0.404686 Hectares
	=	3.025 Bighas
	=	4.840 Square Yards
1 Square Mile	=	2.58999 Square Kilometres
	=	640 Acres
1 Square Kilometre	=	100 Hectares
	=	247 Acres
	=	0.386101 Square Miles
1 Hectare	=	10000 Square Metres
	=	7.46993 Bighas
	=	2.47105 Acres
1 Bigha	=	0.13387 Hectares
	=	0.33058 Acres

ALTITUDE OF DIFFERENT PLACES IN JAINTIA HILLS

Places	Altitude in Metres
1. Jowai	1365
2. Dawki	150
3. Khliehriat	1200
4. Alarem	1080
5. Thadlaskein	1350
6. Laskein	1280
7. Nartiang	1215
8. Sutnga	1125
9. Bapung	1290
10. Shangpung	1275
11. Raliang	1315
12. Umkiang	175
13. Sonapur	225
14. Lumshnong	650
15. Khanduli	890
16. Wahiajer	1350
17. Muktapur	150
18. Nongtalang	690
19. Sokha	575
20. Jarain	1190
21. Pdengshakap	825
22. Mynso	1255
23. Namdong	1060
24. Sohkyphor	1260

**ROAD DISTANCES FROM JOWAI TO OTHER DISTRICT HEAD QUARTERS IN
MEGHALAYA AND ALL AOMMUNITY DEVELOPMENT BLOCK HEAD
QUARTERS OF JAINTIA HILLS**

Jowai	To	District Head Quarters	Distances (in Kms)
		Shillong	65
		Nongpoh	119
		Nongstoin	162
		Tura	389
		Williamnagar	377
		Babhmara via Tura	510

Jowai	To	C&RD Block Headquarters	Distances (in Kms)
		Thadlaskein	10
		Laskein	35
		Khliehriat	34
		Amlarem	27
		Saipung	74

DISTANCE FROM JOWAI TO IMPORTANT PLACES (Kms)

Jowai to:

Mukhla	: 10	Namdong	: 46
Thadlaskein	: 10	Sahaniang	: 48
Ummulong	: 13	Iooksi	: 50
Jarain	: 21	Muktapur	: 52
Shanpung	: 21	Saphai	: 55
Mynso	: 25	Dawki	: 59
Nartiang	: 27	Shillong	: 65
Amlarem	: 27	New Garampani	: 65
Raliang	: 29	Lumshnong	: 66
Rymbai	: 34	Khanduli	: 67
Khliehriat	: 34	Umkiang	: 94
Laskein	: 35	Rata Chera	: 112
Sutnga	: 45	Silchar	: 174

IMPORTANT MARKET IN THE DISTRICT:BLOCKWISE

Sl. No.	Name of Markets	Distance from Block HQ (in Kms)	Distance from District HQ.
1	2	3	4
1	Thadlaskein C&RD Block		
	a) Ummulong	3	13
	b) Nartiang	17	27
	c) Khanduli	60	70
2	Laskein C&RD Block		
	a) Mookaiaw	3	38
	b) Raliang	6	29
	c) Shangpung	14	21
3	Khliehriat C&RD Block		
	a) Khliehriat	0	34
	b) Lad-Rymbai	5	30
	c) Rymbai	10	40
	d) Sutnga	10	45
4	Amlarem C&RD Block		
	a) Jarain	10	17
	b) Muktapur	23	52
	c) Dawki	27	56
5	Saipung C&RD Block		
a) Semasi	15	96	

-
- 1. Area and Population.**
- T – 1.01 - Area, Population, Density and Sex Ratio.
- T – 1.02 - Decadal Population, Growth Variation and Growth Rate.
- T – 1.03 - Population by Religion.
- T – 1.04 - Blockwise and Town Population and Density of Population.
- T – 1.05 - Blockwise Child Population (0-6yrs) and Literacy Rate-2001 Census.
- T – 1.06 - Number of Villages, Town and Households in C&RD Block-2001 Census.
- T – 1.07 - Blockwise Population of Scheduled Tribe, Scheduled Caste and Others-2001 Census.
- T – 1.08 - Distribution of Working Population-2001 Census.
- 2. Climate**
- T – 2.01 - Total Rainfall of Jowai centre during the year 2005-2007 (in mm).
- T – 2.02 - Maximum and Minimum Temperature of Jowai Centre.
during the year 2005-2007(in Celsius).
- T – 2.03 - Relative Humidity of Jowai during the year 2005-2006 (in percentage).
- 3. Education**
- T – 3.01 - Literacy 2001 Census.
- T – 3.02 - Number of Educational Institutions.
- T – 3.03 - Blockwise Number of Educational Institutions.
- T – 3.04 - Number of Students in Educational Institutions.
- T – 3.05 - Blockwise Number of Students in Educational Institutions.
- T – 3.06 - Number of Scheduled Tribe, Scheduled Caste and Other Student in Educational Institutions.
- T – 3.07 - Number of Teachers in Educational Institutions.
- T – 3.08 - Blockwise Number of Teachers in Educational Institutions.
- T – 3.09 - Intake and Out turn of Industrial Training Institute.
- 4. Health and Family Welfare**
- T – 4.01 - Number of Government Hospitals and Dispensaries.
- T – 4.02 - Number of Registered Medical and Para-Medical Personnel.
- T – 4.03 - Number of Patients treated in Government Hospitals/ Institutions.
- T – 4.04 - Family Welfare Programmes.
- T – 4.05 - Number of Registered Birth and Death.
- T – 4.06 - Number of Death by Age Group.
- T – 4.07 - Immunization Programmes.
- 5. Police and Crime Statistics**
- T – 5.01 - Number of Police Stations, Outpost etc.
- T – 5.02 - Strength of Police Personel.
- T – 5.03 - Incidence of Crimes by Major Heads.
- T – 5.04 - Offence under Local and Special Law.

- 6. Social Welfare**
T – 6.01 - Number of Voluntary Organisation, Handicapped Person and Old Age-Pensioners receiving Grand-in-Aid.
- 7. Agriculture**
T – 7.01 - Land Utilisation Statistics.
T – 7.02 - Area and Production of Important Crops.
T – 7.03 - Yield Rates of Important Crops.
T – 7.04 - Distribution of Fertilizers.
- 8. Animal Husbandry and Veterinary**
T – 8.01 - Livestock Census.
T – 8.02 - Number of Veterinary Institution and Services.
T – 8.03 - Production of Milk, Egg and Meat.
- 9. Sericulture**
T – 9.01 - Area under Plantation of Mulberry, Eri, Muga and Production of Cocoons.
- 10. Forest**
T – 10.01 - Geographical Area, Recorded Forest and Actual Forest Cover.
T – 10.02 - Distribution (Classification) of Recorded Forest Area
T – 10.03 - Out turn and Value of Major Forest Production in the District.
- 11. Fisheries**
T – 11.01 - Production and Price of Inland Fish.
T – 11.02 - Fish Seed Distribution.
T – 11.03 - Fish Seed Farm Production of Spawn and Fry Fingerlings.
- 12. Mining**
T – 12.01 - Production and Value of important Minerals.
- 13. Co-operative**
T – 13.01 - Number of Co-operative Societies.
- 14. Industries**
T – 14.01 - Number of Small Scale Industries, Plant Machinery and Persons Employed.
- 15. Labour and Employment**
T – 15.01 - Registration of Employment through Divisional Employment Exchange.
T – 15.02 - Number of Employment in Public Sector.
T – 15.03 - Number of Employment in Private Sector.
- 16. Roads and Transport**
T – 16.01 - Road Length maintained by the P.W.D (Roads).
T – 16.02 - Registration of Vehicles by Class of Ownership.
T – 16.03 - Number of Road Accidents, Number of Person Killed and Injured.
- 17. Communication**
T – 17.01 - Number of Telegraphs and Post Office.
T – 17.02 - Number of Telephone Exchange and Telephone Subscribers.

18. Tourism

T – 18.01 - Number of Tourist Spots and Tourist Visiting.

19. Election

T – 19.01 - Election to the Meghalaya Legislative Assembly, Jaintia Hills District.

T – 19.02 - Total Number of Votes Polled during the last Legislative Assembly Election 2008.

T – 19.03 - Number of Candidates in the Election to the Meghalaya Legislative Assembly, Jaintia Hills District.

T – 19.04 - Number of Candidates who contested to Meghalaya Legislative Assembly.

T – 19.05 - Election to the Jaintia Hills Autonomous District Council 2004.

20. Electricity

T – 20.01 - Number of Villages Electrified.

21. Excise

T – 21.01 - Consumption of Indian made Foreign Liquor and Local Liquor.

22. Supply

T – 22.01 - Number of Fair Price Shops.

23. Finance

T – 23.01 - Collection of Excise, Revenue, Sales Tax, Taxes on Petroleum, Motor Spirit etc.

AREA AND POPULATION

Table: 1.01

Area, Population, Density and Sex Ratio

Sl.No.	Particulars	Units	2001
1	2	3	4
1	Area	Sq. Km	3819
2	Population:		
	(a) Persons	Nos.	299108
	(b) Male	Nos.	149891
	(c) Female	Nos.	149217
	(i) Rural	Nos.	274051
	(ii) Urban	Nos.	25057
3	Density of Population:	Per Sq. Km	78
4	Sex Ratio (Female per 100 Males):		
	Total	Nos.	996
	Rural	Nos.	991
	Urban	Nos.	1043
5	Literacy Rate:		
	Persons	Nos.	51.0
	Male	Nos.	50.1
	Female	Nos.	53.7

Source: - Census of India

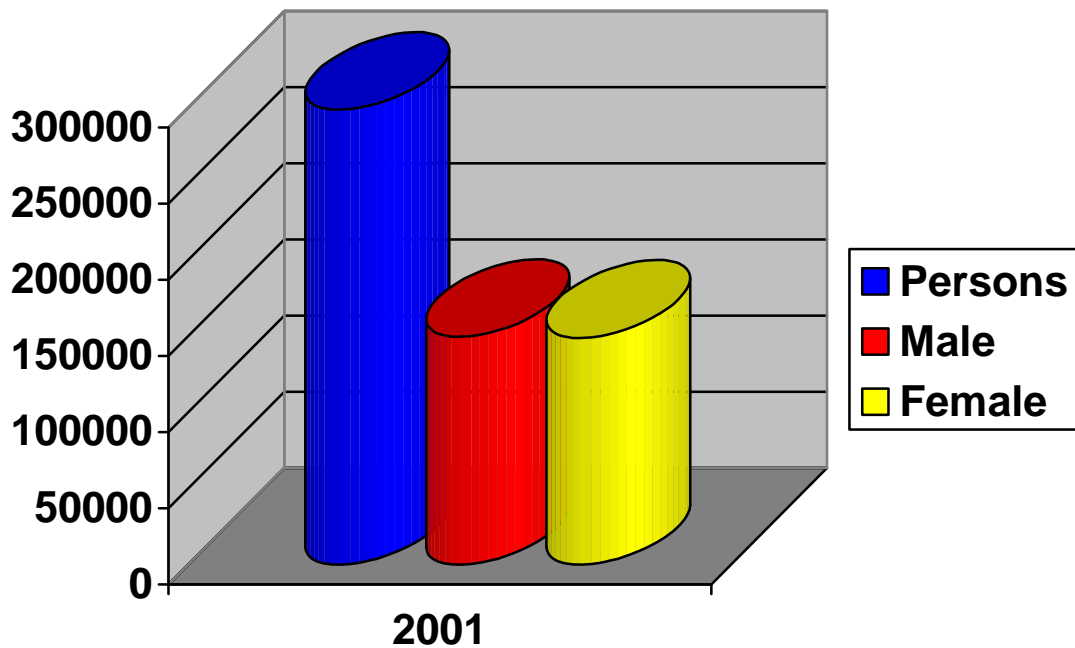


Fig.1 Population

Table: 1.02**Decadal Population Growth Variation and Growth Rate**

Sl.No.	Particulars	Units	1991	2001
1	2	3	4	5
1	Population:			
	Total	Nos.	220473	299108
	Rural	Nos.	199872	274051
	Urban	Nos.	20601	25057
2	Variation:			
	Total	P. c	40.97	35.67
	Rural	P. c	39.3	37.1
	Urban	P. c	59.4	21.6
3	Growth Rate:			
	Total	Nos.	0.41	0.36
	Rural	Nos.	0.39	0.37
	Urban	Nos.	0.59	0.22

Source: - Census of India.

Table: 1.03**Population by Religion**

Sl. No.	Religion		2001-Census		
			Total	Male	Female
1	2	3	4	5	6
1	All religions	Total	299108	149891	149217
		Rural	274051	137629	136422
		Urban	25057	12262	12795
2	Christians	Total	195196	96906	98290
		Rural	179788	89540	90248
		Urban	15408	7366	8042
3	Hindus	Total	13150	7927	5223
		Rural	11860	7135	4725
		Urban	1290	792	498
4	Muslims	Total	2236	1394	842
		Rural	1933	1215	718
		Urban	303	179	124
5	Sikhs	Total	42	33	9
		Rural	42	33	9
		Urban	-	-	-
6	Buddhists	Total	213	124	89
		Rural	177	105	72
		Urban	36	19	17
7	Jains	Total	28	16	12
		Rural	11	5	6
		Urban	17	11	6
8	Others	Total	87827	43299	44537
		Roral	79832	39399	40433
		Urban	7995	3891	4104

9	Religion not stated	Total	416	201	215
		Rural	408	197	211
		Urban	8	4	4

Source: - Census of India.

Table: 1.04

Blockwise and Town Population and Density of Population

Sl. No.	Names Block / Town	Area Sq. Km	Population			Density of Population
			Persons	Male	Female	
1	2	3	4	5	6	7
1	Thadlaskein	896.60	79563	39303	40260	89
2	Laskein	390.40	65726	32886	32840	168
3	Khliehriat	1280	64898	33287	31611	51
4	Amlarem	398	35970	18158	17812	90
5	Saipung	846	27894	13995	13899	33
6	Jowai	8	25057	12262	12795	3132

Source: - Census of India.

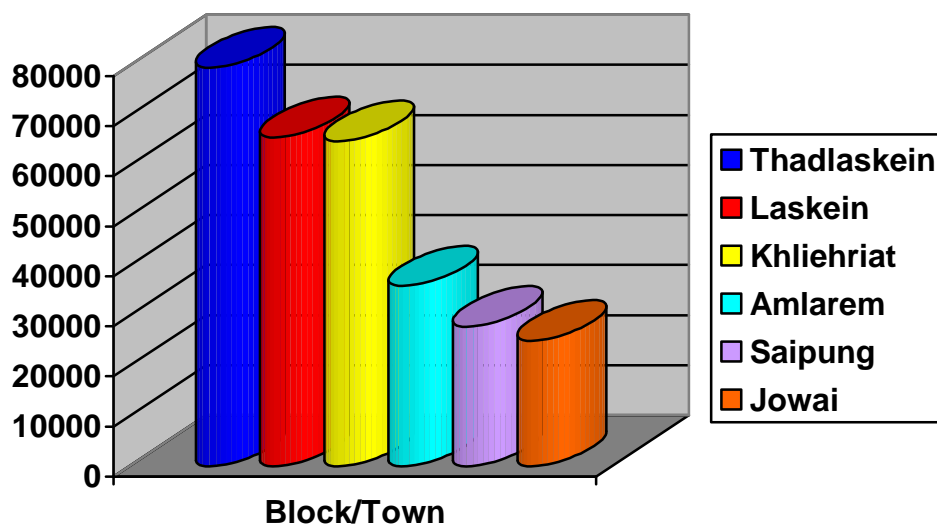


Fig.2 Blockwise and Town Population

Table: 1.05

Blockwise Child Population (0-6yrs) and Literacy Rate - 2001

Sl. No.	Names of the Blocks	Population (0-6yrs)			Sex Ratio	Literacy Rate		
		Person	Male	Female		Person	Male	Female
1	2	3	4	5	6	7	8	9
	<u>Jaintia Hills</u>	67409	33795	33614	995	51.9	50.1	55.7
1	Thadlaskein	22864	11439	11425	999	56.2	53.1	59.3
2	Laskein	16036	8068	7968	988	41.9	36.7	47.2
3	Khliehriat	20978	10531	10447	992	48.1	49.7	46.5
4	Amlarem	7531	3757	3774	1005	66.1	65.8	66.5
5	Saipung	-	-	-	-	-	-	-

Source: - Census of India.

Table: 1.06

Number of Villages, Town and Households in each C&RD Block-2001

Sl. No.	Name of C&RD Blocks	Number of Villages	Number of Town	Number of Households
1	2	3	4	5
1	Thadlaskein	121	1	17885
2	Laskein	86	-	10560
3	Khliehriat	100	-	10792
4	Amlarem	86	-	5956
5	Saipung	82	-	4725

Source: - Census of India.

Table: 1.07

Blockwise Population of Scheduled Tribe, Scheduled Caste and Others:2001

Sl. No.	C&RD Block / Town	Population			
		S.T	S.C	Others	Total
1	2	3	4	5	6
1	Thalaskkein	100413	35	4172	104620
2	Laskein	64307	43	1376	65726
3	Khliehriat	88126	96	4570	92792
4	Amlarem	3402	282	1485	35970
5	Total	287049	456	11603	229108

Source: - Census of India.

Table: 1.08

Distribution of Working Population :2001 Census

Sl. No.	Category of Workers	Male	Female	Total
1	2	3	4	5
1	Cultivators	35849	23932	59781
2	Agricultural Workers	17535	18760	36295
3	Workers in Households Industry	1292	1366	2658
4	Other workers	17193	10950	28143
5	Total Workers	71869	55008	126877
6	Marginal Workers	12452	18790	31242
7	Non-Workers	78022	94209	172231

Source: - Census of India.

CLIMATE

Table: 2.01

Total Rainfall of Jowai Centre during the year 2005-2007(In mm)

Sl. No.	Name of Centre	2006	2007	2008
1	2	3	4	5
1	Jowai	2897.7	3041.8	5379.44

Source: - Research Officer, District and Local Research Station and Laboratories, Jaintia Hills, Jowai.

Table: 2.02

Maximum and Minimum Temperature of Jowai Centre during the year 2005-2007 (In Celcius)

Sl. No.	Name of Centre	2005		2006		2007		2008	
		Max.	Min.	Max.	Min.	Max.	Min.	Max.	Min.
1	2	3	4	5	6	7	8	9	10
1	Jowai	23.68	14.93	24.00	14.92	22.06	15.70	24.07	14.44

Source: -Research Officer, District and Local Research Station and Laboratories, Jaintia Hills, Jowai.

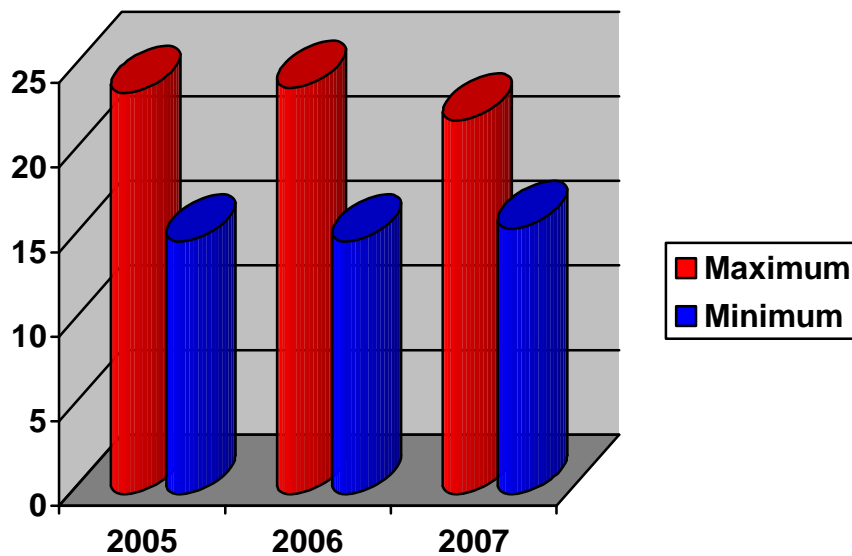


Fig. 3 Maximum and Minimum Temperatures of Jowai (in Celsius).

Table: 2.03

Total Relative Humidity of Jowai during the year 2005-2007(In percentage)

Sl. No.	Name of Centre	2005	2006	2007	2008
1	2	3	4	5	6
1	Jowai	1045.69	1061.97	1090.89	1089.50

Source: - Research Officer, District and Local Research Station and Laboratories, Jaintia Hills, Jowai.

EDUCATION

Table: 3.01

Literacy 2001 Census

Sl.No.	Items	Number of Persons	Percentage of Literacy to Total Percentage
1	2	3	4
1	Total Population	299108	40.2
	a) Male	149891	38.8
	b) Female	149217	41.6
	c) Rural	274051	37.1
	d) Urban	25057	74.3
2	Literate Persons (7yrs & above)		
	a) Male	58143	50.1
	b) Female	62039	53.7
	c) Rural	101569	48.2
	d) Urban	18613	89.4

Source: - Census of India.

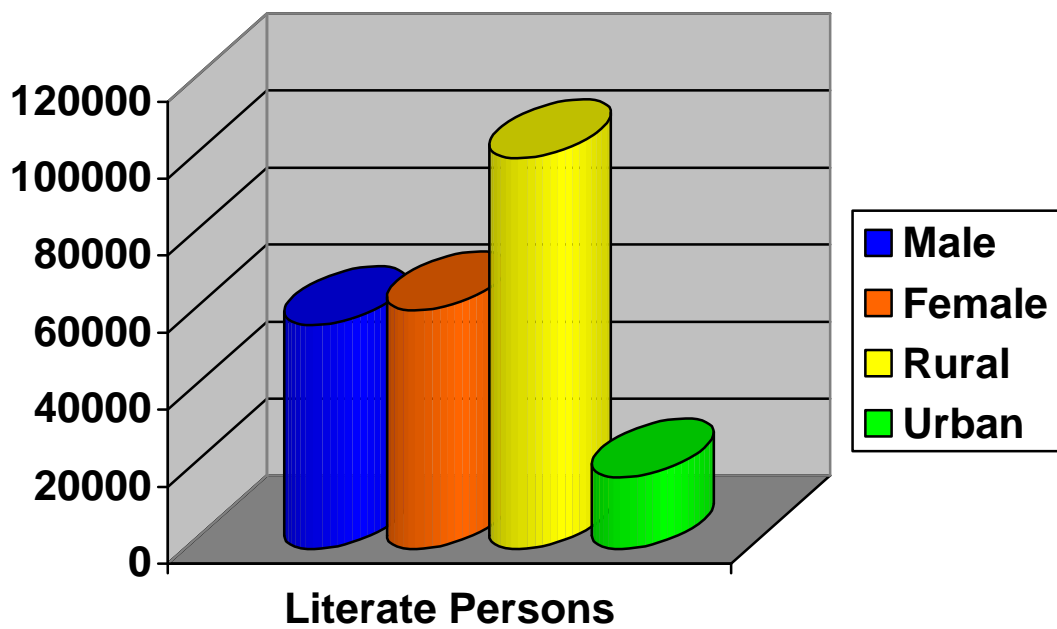


Fig. 4 Literate Persons (7 years and above)

Table: 3.02**Number of Educational Institutions**

Sl.No.	Particulars	2007			2008		
		Type of Institution			Type of Institution		
		Private	Govt. including Govt. aided	Total	Private	Govt. including Govt. aided	Total
1	2	3	4	5	6	7	8
1.	Primary	38	1304	1342	59	1455	1514
2.	Upper Primary	14	444	458	21	491	512
3.	Secondary Schools	62	3	65	62	3	65
4.	Higher Secondary Schools	11	3	14	11	3	14
5.	College	5	1	6	5	1	6
6.	University	-	-	-	-	-	-
7.	Teacher Training/Basic and Non-Basic	-	2	2	-	2	2
8.	Schools for Vocational/Professional/Special and other Educational including Adult Education (I.T.I).	-	1	1	-	1	1
9.	Adult Education Centres	-	-	-	-	-	-

Source: - 1) Inspector of Schools, Jowai.

2) D.I.of Schools, Jowai., D.I.of Schools Khliehriat, D.I. of Schools, Amlarem.

3) Principal of Kiang Nongbah College, Thomas Jones College, Jaintia Eastern College, Nongtalang College, DIET and Adventist College, Jowai.

4) District Mission Co-ordinator, SSASMAM, Jowai.

5) Vice Principal, ITI, Jowai.

Table: 3.03**Blockwise Number of Educational Institutions**

Sl. No.	Particulars	Year	Thadlaskein C & RD Block	Laskein C & RD Block	Khliehriat C & RD Block	Amlarem C & RD Block	Saipung C & RD Block
1	2	3	4	5	6	7	8
1	Primary	2008	527	300	454	233	N.A.
2	Upper Primary	2008	197	93	156	66	N.A.
3	Secondary Schools	2008	24	13	19	9	N.A.
4	Higher Secondary Schools	2008	6	3	4	2	N.A.
5	Colleges	2008	3	-	1	1	-

Source: - 1) Inspector of Schools, Jowai.

2) D.I.of Schools, Jowai., D.I.of Schools Khliehriat, D.I. of Schools, Amlarem.

3) Principal of Kiang Nongbah College, Thomas Jones College, Jaintia Eastern College, Nongtalang College, and Adventist College, Jowai.

4) District Mission Co-ordinator, SSASMAM, Jowai.

Table: 3.03**Number of Students in Educational Institutions**

Sl. No.	Type of Institution	Students	2007			2008		
			Private	Govt. including Govt. Aided	Total	Private	Govt. including Govt. Aided	Total
1	2	3	4	5	6	7	8	9
1	Primary	Boys	2722	22226	24948	2627	26931	29558
		Girls	3061	26198	29259	2910	30591	33501
		Total	5783	48424	54207	5537	57522	63059
2	Upper Primary	Boys	1631	11248	12879	2155	11708	13863
		Girls	1845	14909	16754	1917	14411	16328
		Total	3476	26157	29633	4072	26119	30191
3	Secondary Schools	Boys	5385	1091	6476	5395	1139	6534
		Girls	5987	1392	7379	5985	1434	7419
		Total	11372	2483	13855	11380	2573	13953
4	Higher Secondary Schools	Boys	139	120	259	148	113	261
		Girls	228	185	413	222	195	417
		Total	367	105	672	370	308	678
5	College	Boys	655	1234	1889	809	1312	2121
		Girls	1013	1364	2377	1363	1600	2963
		Total	1668	2598	4266	2172	2912	5084

Source: - 1) Inspector of Schools, Jowai.

2) D.I.of Schools, Jowai., D.I.of Schools Khliehriat, D.I. of Schools, Amlarem.

3) Principal of Kiang Nongbah College, Thomas Jones College, Jaintia Eastern College, Nongtalang College, and Adventist College, Jowai.

4) District Mission Co-ordinator, SSASMAM, Jowai.

Table: 3.04**Blockwise Number of Students in Educational Institutions**

Sl. No.	Particulars	Year	Students	Thadlaskein C & RD Block	Laskein C & RD Block	Khliehriat C & RD Block	Amlarem C & RD Block	Saipung C & RD Block
1	2	3	4	5	6	7	8	9
1	Primary	2008	Boys	9834	5063	11033	3628	N.A.
			Girls	11534	6452	11398	4117	N.A.
			Total	21368	11515	22431	7745	N.A.
2	Upper Primary	2008	Boys	5122	2262	5201	1278	N.A.
			Girls	6033	3248	5477	1570	N.A.
			Total	11155	5510	10678	2848	N.A.
3	Secondary Schools	2008	Boys	3441	909	1809	375	N.A.
			Girls	4041	1062	1826	490	N.A.
			Total	7482	1971	3635	865	N.A.
4	Higher Secondary Schools	2008	Boys	106	45	76	34	N.A.
			Girls	114	64	78	48	N.A.
			Total	220	109	154	82	N.A.
5	Colleges	2008	Boys	1682	NIL	189	250	N.A.
			Girls	2423	NIL	340	200	N.A.
			Total	4105	NIL	529	450	N.A.

Source: - 1) Inspector of Schools, Jowai.

2) D.I.of Schools, Jowai., D.I.of Schools Khliehriat, D.I. of Schools, Amlarem.

3) Principal of Kiang Nongbah College, Thomas Jones College, Jaintia Eastern College, Nongtalang College, and Adventist College, Jowai.

4) District Mission Co-ordinator, SSASMAM, Jowai.

Table: 3.05**Number of Scheduled Tribe & Scheduled Caste in Educational Institutions**

Sl. No.	Type of Institutions	Students	2007				2008			
			S.T.	S.C.	Others	Total	S.T.	S.C.	Others	Total
1	2	3	4	5	6	7	8	9	10	11
1	Primary	Boys	24542	169	237	24948	28993	277	288	29558
		Girls	28947	128	184	13476	33045	198	258	33501
		Total	53489	297	421	25128	62038	475	546	63059
2	Upper Primary	Boys	12329	206	344	12879	13008	246	609	13863
		Girls	16227	199	328	16754	15812	189	327	16328
		Total	28556	405	672	29633	28820	435	936	30191
3	Secondary Schools	Boys	6300	78	78	6476	6357	80	97	6534
		Girls	7302	40	37	7379	7347	42	30	7419
		Total	13602	118	115	13855	13704	122	127	13953
4	Higher Secondary Schools	Boys	245	6	8	259	245	7	9	261
		Girls	387	9	17	413	390	4	18	417
		Total	632	15	25	672	635	16	27	678
5	Colleges	Boys	1860	2	27	1889	2064	2	55	2121
		Girls	2354	-	23	2377	2908	-	55	2963
		Total	4212	2	50	4266	4972	2	110	5084

Source: - 1) Inspector of Schools, Jowai.

2) D.I.of Schools, Jowai., D.I.of Schools Khliehriat, D.I. of Schools, Amlarem.

3) Principal of Kiang Nongbah College, Thomas Jones College, Jaintia Eastern College, Nongtalang College, and Adventist College, Jowai.

4) District Mission Co-ordinator, SSASMAM, Jowai.

Table: 3.06**Number of Teachers in Educational Institutions**

Sl. No.	Particulars	Students	2007			2008		
			Private	Govt. including Govt. aided	Total	Private	Govt. including Govt. aided	Total
1	2	3	4	5	6	7	8	9
1	Primary	Male	30	1359	1389	48	1022	1070
		Female	31	2178	2209	34	2781	2815
		Total	61	3537	3598	82	3803	3885
2	Upper Primary	Male	15	952	967	16	817	833
		Female	18	1021	1039	15	1509	1522
		Total	33	1973	2006	31	2326	2355
3	Secondary Schools	Male	253	11	264	252	11	263
		Female	314	12	326	313	13	326
		Total	567	23	590	565	24	589
4	Higher Secondary Schools	Male	42	14	56	42	14	56
		Female	43	21	64	43	21	64
		Total	85	35	120	85	35	120
5	College	Male	40	38	78	41	40	81
		Female	58	55	113	62	51	113
		Total	98	93	191	103	91	194

6	Teacher Training/ Basic and Non-Basic	Male	-	7	7	-	8	8
		Female	-	11	11	-	11	11
		Total	-	18	18	-	19	19
7	Schools for Vocational Training/Professional/ Special and other Education including Adult Education	Male	-	6	6	-	6	6
		Female	-	2	2	-	2	2
		Total	-	8	8	-	8	8

Source: - 1) Inspector of Schools, D.I. of Schools, Jowai, D.I. of Schools, Khliehriat.
D.I. of Schools, Amlarem.

- 2) Principal of Kiang Nongbah College, Principal of Nongtalang College,
- 3) Principal of Thomas Jones Synod College, Principal of Jaintia Eastern College,
- 4) Principal of Northeast Adventist College, Principal of D.I.E.T,
- 5) Principal of I.T.I.

Table: 3.07

Blockwise Number of Teachers in Educational Institutions

Sl. No.	Particulars	Year	Teachers	Thadlaskein C & RD Block	Laskein C & RD Block	Khliehriat C & RD Block	Amlarem C & RD Block	Saipung C & RD Block
1	2	3	4	5	6	7	8	9
1	Primary	2008	Male	273	186	380	231	N.A.
			Female	993	603	817	402	N.A.
			Total	1266	789	1197	633	N.A.
2	Upper Primary	2008	Male	207	150	356	120	N.A.
			Female	577	286	487	172	N.A.
			Total	784	436	843	292	N.A.
3	Secondary Schools	2008	Male	138	30	70	25	N.A.
			Female	152	68	79	27	N.A.
			Total	290	98	149	52	N.A.
4	Higher Secondary Schools	2008	Male	25	9	14	8	N.A.
			Female	27	11	17	9	N.A.
			Total	52	20	31	17	N.A.
5	Colleges	2008	Male	58	NIL	9	13	N.A.
			Female	90	NIL	10	11	N.A.
			Total	148	NIL	19	24	N.A.

Source: - 1) Inspector of Schools, Jowai.

- 2) D.I. of Schools, Jowai., D.I. of Schools Khliehriat, D.I. of Schools, Amlarem.
- 3) Principal of Kiang Nongbah College, Thomas Jones College, Jaintia Eastern College, Nongtalang College, and Adventist College, Jowai.
- 4) District Mission Co-ordinator, SSASMAM, Jowai.

Table: 3.08

Intake and Out turn of Industrial Training Institute

Sl. No.	Particulars	2005		2006		2007		2008	
		Intake	Out turn	Intake	Out turn	Intake	Out turn	Intake	Out turn
1	2	3	4	5	6	7	8	9	10
1	Electrician	5	Nil	Nil	5	15	Nil	Nil	15
2	Wireman	Nil	Nil	Nil	Nil	Nil	Nil	Nil	Nil
3	Fitter	Nil	Nil	Nil	Nil	Nil	Nil	Nil	Nil
4	Mechanic (Composite)	Nil	Nil	Nil	Nil	Nil	Nil	Nil	NIL
5	Turner	Nil	Nil	Nil	Nil	Nil	Nil	Nil	Nil
6	Welder (Gas & Electric)	1	1	6	2	3	3	2	Nil
7	Stenography	3	3	7	3	14	12	11	Nil
8	Mechanic (M.V)	5	Nil	Nil	5	7	Nil	Nil	7
9	Carpentry	Nil	Nil	Nil	Nil	Nil	Nil	Nil	Nil
10	Draftsman	Nil	Nil	Nil	Nil	Nil	Nil	Nil	Nil

Source: - Principal, Industrial Training Institute, Khliehtyrshi, Jowai.

HEALTH AND FAMILY WELFARE

Table: 4.01

Number of Government Hospitals and Dispensaries

Sl. No.	Particulars	2006	2007	2008
1	2	3	4	5
1	Hospitals	1	1	1
2	Dispensaries	1	1	1
3	P.H.C'S	16	17	17
4	C.H.C'S	5	5	5
5	Family Welfare Centres	3	3	3
6	Maternity and Child Welfare	2	2	2
7	Any Other Sub-Centres	72	72	72

Source: - District Medical and Health Officer, Jowai

Table: 4.02

Number of Registered Medical and Para-medical Personnel.

Sl. No.	Particulars	2006	2007	As on July 2008
1	2	3	4	5
1	Doctors-			
	a) Graduates	56	56	47
	b) Licentiates	1	1	1
2	Nurses (General)	27	27	37
3	Midwives	-	-	-
4	Health Visitor	9	12	18
5	Auxiliary Nurses	129	129	123
6	Pharmacist	25	25	25
7	Other Para-medical Personnel Registered during the year	36	36	36

Source: - District Medical and Health Officer, Jowai.

Table: 4.03

Patients treated in Government Hospitals/Institutions

Sl. No.	Particulars	2006		2007		As on July 2008	
		Indoor	Outdoor	Indoor	Outdoor	Indoor	Outdoor
1	2	3	4	5	6	7	8
1	No. of Patients in Hospitals (C.H.C)	2571	48,336	2354	69,491	1313	35,403
2	P.H.C	244	1,34,399	440	1,04,078	14	56,576
3	Dispensaries	-	7419	-	5455	-	3440
4	Family Welfare Clinics	-	-	-	-	-	-
5	Maternity Health Care	-	-	-	-	-	-

Source: - District Medical and Health Officer, Jowai.

Table: 4.04

Family Welfare Programme

Sl. No.	Particulars	2006	2007	As on July 2008
1	2	3	4	5
1	I.U.D	172	356	55
2	Vasectomy	-	-	-
3	Tubectomy	187	301	251
4	C.C.Users	21,124 pieces	9700 pieces	24,550 pieces
5	Pills	5374 cycles	573 cycles	1210 cycles

Source: - District Medical and Health Officer.

Table: 4.05

Registration of Birth and Death

Sl. No.	Particulars	2006	2007	As on July 2008
1	2	3	4	5
1	Birth-			
	a) Male	5499	5480	3494
	b) Female	5343	5486	3469
	c) Total	10,842	10,966	6963
2	Death-			
	a) Male	1532	1213	738
	b) Female	1209	1030	582
	c) Total	2741	2243	1320

Source: - District Medical and Health Officer, Jowai.

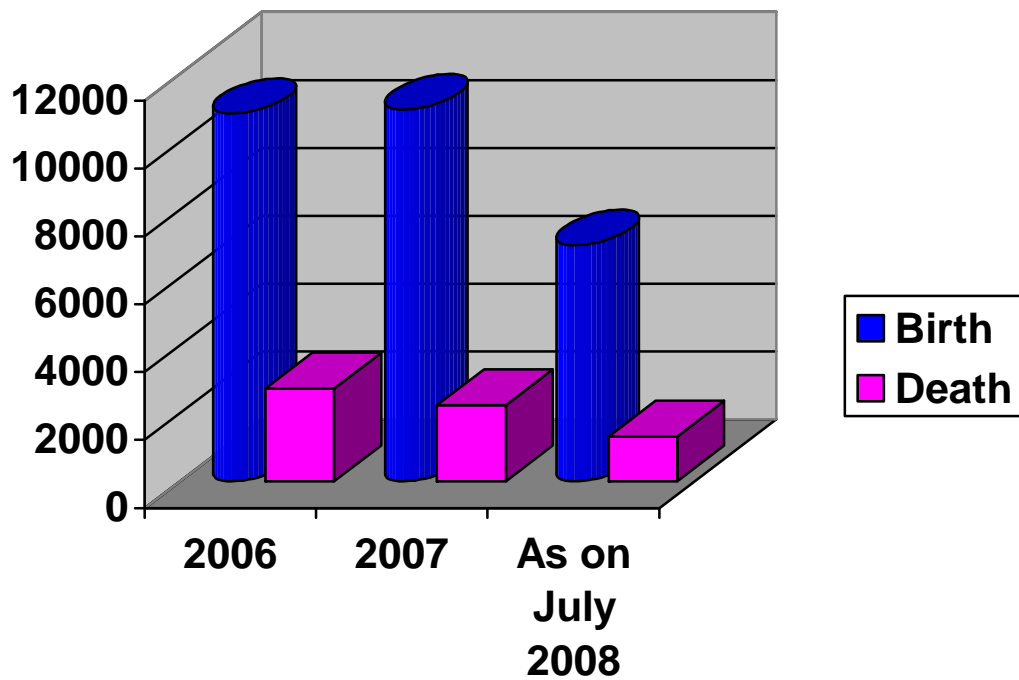


Fig.5 Registration of Birth and Death

Table: 4.06
Number of Death by Age Group

Sl. No.	Particulars	2006		2007		As on July 2008	
		Male	Female	Male	Female	Male	Female
1	2	3	4	5	6	7	8
1	Below 1 year	326	286	276	247	143	132
2	1 – 4 years	280	285	158	175	83	63
3	5 – 14 years	195	123	84	71	60	44
4	15 – 24 years	128	71	99	72	49	52
5	25 – 34 years	102	69	99	73	80	45
6	35 – 44 years	114	72	107	62	95	55
7	45 – 64 years	128	99	204	117	120	72
8	65 – 74 years	98	67	99	101	54	36
9	75 and above	161	137	87	112	54	83
10	Total	1532	1209	1213	1030	738	582

Source: - District Medical and Health Officer, Jowai.

Table: 4.07
Number and Types of Beds

Sl. No.	Years	General Beds	Maternity Beds	Paediatric Beds	T.B Beds	Others	Total
1	2	3	4		5	6	7
1	2005	342	21	27	-	4	394
2	2006	342	21	27	-	4	394
3	2007	348	21	27	-	4	400
4	As on July 2008	348	21	27	-	4	400

Source: - District Medical and Health Officer, Jowai.

Table: 4.08
Immunization Programme

Sl. No.	Particulars	2005	2006	2007	As on July 2008
1	2	3	4	5	6
1	O.P.V	8515	7489	9633	8201
2	Measles	6873	7460	8291	8308
3	B.C.G	10509	10355	12707	11154
4	D.T. (5 Years)	9264	9186	10875	8027
5	T.T. (Pregnant Women)	6251	6453	7204	6313
6	T.T. (10 years)	7315	5483	6931	4549
7	T.T. (16 years)	2137	2214	2171	737
8	Fully Immunization	5350	6873	7113	8592

Source: - District Medical and Health Officer, Jowai.

POLICE AND CRIME STATISTICS

Table: 5.01

Number of Police Stations, Outposts, etc.

Sl.No	Particulars	2006	2007	2008
1	2	3	4	5
1	No. of Police Station	3	4	4
2	No. of Beat House	2	2	2
3	No. of Out Post	4	3	3
4	No. of Investigation Centres	1	1	1
5	No. of Check Post	2	2	2
6	No. of Patrol Post	2	2	2
7	No. of Additional Camp	-	1	1

Source: - Superintendent of Police, Jowai

Table: 5.02

Strength of Police Personnel

Sl.No.	Particulars	2006	2007	2008
1	2	3	4	5
1	No. of Superintendent of Police	1	1	1
2	No. of Deputy Superintendent of Police	1	2	3
3	No. of Inspector of Police	5	5	4
4	No. of Sub- Inspector of Police	34	36	37
5	No. of Assistant Inspector of Police	-	-	-
6	No. of Head Constable (AB and UB)	9	8	7
7	No. of Havilder (AB and UB)	9	8	11
8	No. of Constables	260	219	233
9	No. of Cooks and Sweepers	6	6	6

Source: - Superintendent of Police, Jowai.

Table: 5.03

Incidence of Crimes by Major Head

Sl.No.	Types of Crimes	2006	2007	2008
1	2	3	4	5
1	Murder	50	19	28
2	Rape	19	13	10
3	Kidnapped and Abduction	3	1	4
4	Dacoity	7	6	2
5	Robbery	5	2	5
6	Theft	41	20	48
7	Riots	-	-	-
8	Criminal Breach of Trust	4	1	5
9	Cheating	1	3	9
10	Other IPC	156	76	71

Source: - Superintendent of Police, Jowai.

Table: 5.04

Offence under Local and Special Law

Sl.No.	Particulars	2006	2007	2008
1	2	3	4	5
1	Arms Act	2	-	-
2	Gambling Act	2	17	12
3	Explosive and Explosive Substances Act	-	4	-
4	Prohibition Act	-	-	-
5	Other Local and Special Law	13	3	15

Source: - Superintendent of Police, Jowai.

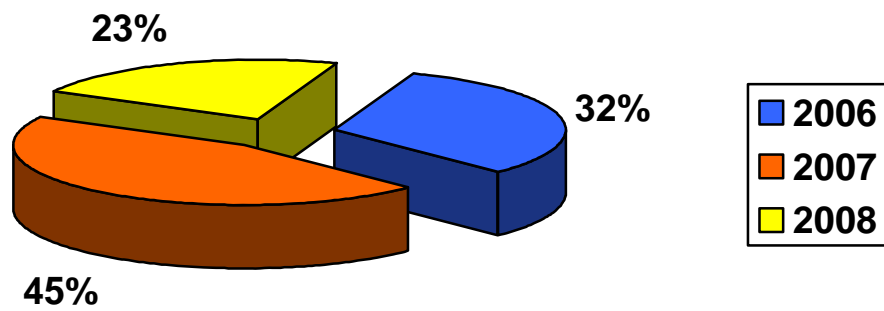


Fig. 6 Offences under Local and Special Laws.

SOCIAL WELFARE

Table: 6.01

**Number of Voluntary Organisation, Handicapped Persons and Old Age Pensionery
Receiving Grant-in –Aid.**

Sl.No.	Particulars	2006	2007	2008
1	2	3	4	5
1	Voluntary Organisations	15	11	15
2	Handicapped persons			
	(a) Token Relief Grant to passed out vocational Training	20	12	8
	(b) Scholarship to Physically Handicapped students	118	16	45
	(c) Prosthetic Aids	-	-	-
3	Financial Assistant for Medical Treatment for Aged	15	22	34

Source: - District Social Welfare Officer, Jowai.

AGRICULTURE

Table: 7.01

Land Utilisation Statistics (in Hectare)

Sl. No.	Particulars	2005	2006	2007
1	2	3	4	5
1	Reporting Area for Land Utilisation Statistics	3,81,100	3,81,100	3,81,100
2	Forest	1,54,094	1,54,121	1,54,125
3	Not available for cultivation	30,886	30,893	30,905
4	Other un-cultivation land excluding fallow land	1,36,922	1,37,106	1,37,082
5	Fallow Land	26,706	26,934	26,064
6	Net Area Sown	32,422	32,046	32,064
7	Area sown more than once	360	366	366
8	Total cropped Area	32,782	32,412	32,430

Source: - District Agricultural Officer, Jowai.

Table: 7.02

Area and Production of Important Crops

Sl. No.	Particulars	2005		2006		2007	
		Area (Hect)	Production (MT)	Area (Hect)	Production (MT)	Area (Hect)	Production (MT)
1	2	3	4	5	6	7	8
1	Rice	16593	24051	16596	25749	12195	18621
2	Maize	2876	3,390	2915	3432	2922.5	3438
3	Millet	-	-	369	445	366.5	442.5
4	Turmeric	894	5123	1039	5562	1105	5874
5	Potato	288	1600	267	1338	285.5	1354
6	Sweet Potato	2014	5846	2018	5872	1989	5672
7	Areca nut	1594	3193	1599	33207	1668	3342
8	Banana	326	1446	332	1452	336	1453
9	Chillies	131	100	132	102	129	99.88
10	Soya bean	398	402	399	403	410	416
11	Jhum Paddy	220	300	220	299	217	293
12	Ginger	228	2226	229	2299	274	2756
13	Citrus Fruits	1110	6185	1151	6153	1155	6153

Source: - District Agricultural Officer, Jowai.

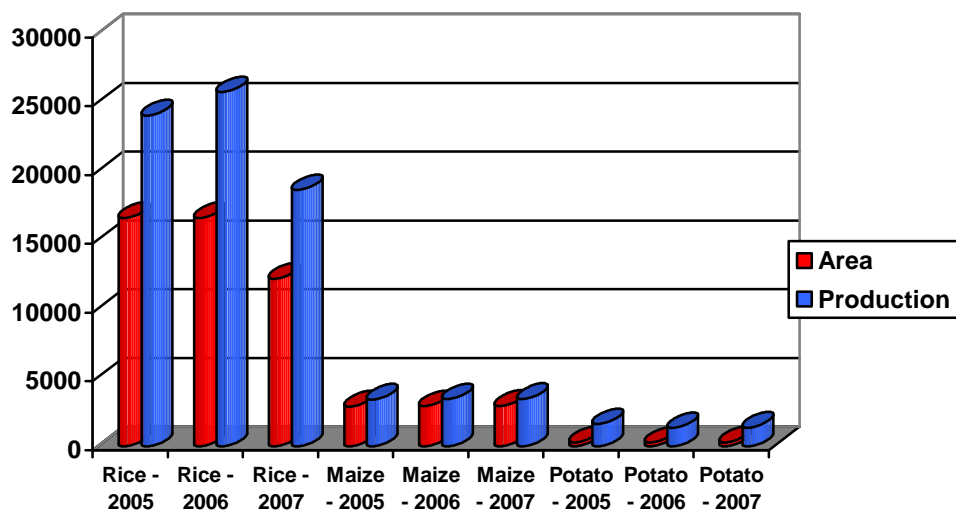


Fig.7 Area and Production of Principle Crops.

Table: 7.03

Yield Rates of the Important (Kgs per Hectare)

Sl. No.	Crops	2004-2005	2005-2006	2006-2007
1	2	3	4	5
1	Rice	1,449	1413	1194
2	Maize	1,179	N.A.	1280
3	Ginger	N.A.	10074	14559
4	Potato	5,558	7413	7413

Source: - District Agricultural Officer, Jowai.

Table: 7.04

Distribution of Fertilizers (M.T)

Sl. No.	Particulars	Name of Fertilizers	2004-2005	2005-2006	2006-2007
1	2	3	4	5	6
1	Meghalaya State Co-operative Marketing Consumers Federation Ltd. Jowai.	a) Single Super Phosphate	402	342	301
		b) Urea	192	275	261
		c) D.A.P	309	319	367
		d) M.O.P	18	30	28
		e) Amrit 8.8.8	-	-	-
		f) Bone meal	159	168	74

Source: - 1) IFFCO, Gauhati.
2) Indian Potash Ltd. Gauhati.
3) Teesta Agro. Industries, Siliguri.

ANIMAL HUSBANDRY AND VETERINARY

Table: 8.01

Animal Husbandry Veterinary Livestock Census 2003 -2004

Sl.No.	Name of Livestock	Unit (Nos.)
1	2	3
1	Cattle	1,91,914
2	Buffaloes	2,201
3	Sheep	309
4	Goats	24,015
5	Horses and ponies	317
6	Pigs	47,427
7	Other Livestock (Dogs)	18,844
8	Total Livestock	1,86,183
9	Total	2,05,027
10	Poultry	2,36,091
11	Grand Total	4,41,118

Source: District A.H.& Vety. Officer, Jowai.

Table: 8.02

Number of Veterinary Institution and Services.

Sl.No.	Items	2006	2007	2008
1	2	3	4	5
1	Veterinary Hospital	1	1	1
2	Dispensaries	6	6	6
3	Veterinary Aid Centre	13	13	13
4	Stockman Centres	-	-	-
5	Key Village Centres	8	8	8
6	Veterinary Block Centres	4	4	4
7	Milk Plants & Milk chilling Plants	1	1	1
8	Veterinary Doctors/ Surgeons	27	28	27
9	Livestock cases treated in veterinary hospital and Dispensaries.	1,86,696	1,97,496	79,564
10	Livestock cases vaccinated and Poultry.			
	(a) Livestock	32,434	35,534	29,455
	(b) Poultry	2,24,852	2,24,953	1,41,938

Note :-Cases treated & vaccinated upto June 2008

Source: District A.H.& Vety. Officer, Jowai.

Table: 8.03

Production of Milk, Eggs and Meat.

Sl.No.	Particulars	Unit	2006	2007	2008
1	2	3	4	5	6
1	Milk	000'ltrs	6480	6630	-
2	Eggs	000'Nos	15010	151091	-
3	Beef	000'kgs	18780	1581	-
4	Pork	000'kgs	12660	976	-
5	Poultry Product	000'kgs	-	-	-

Source: - District A.H. & Vety. Officer, Jowai.

SERICULTURE

Table: 9.01

Area under Plantation of Mulberry, Eri, Muga and Production

Sl. No.	Particulars	2005-2006		2006-2007		2007-2008	
		Area Under Plantation (Hect)	Production (Kgs)	Area Under Plantation (Hect)	Production (Kgs)	Area Under Plantation (Hect)	Production (Kgs)
1	2	3	4	5	6	7	8
1	Mulberry	25	6760	25	5200	50	5500
2	Eri	17	56800	17	60000	100	54000
3	Muga	1	100000	1	12000	20	15000
4	Tassar	-	-	-	-	-	-

Source:-District Sericulture Officer, Jowai.

FOREST

Table: 10.01

Geographical Area, Recorded Forest and Actual Forest 2006-2007 & 2007-2008

Sl. No.	Year	Unit	Geographic Area (G.A)	Recorded Forest		Forest Cover	
				Area	Percent	Area	Percent
1	2	3	4	5	6	7	8
1	2006-2007	Sq.Kms	3819	2145.33	56.17	2457	64.34
2	2007-2008	Sq.Kms	3819	2145.33	56.17	2457	64.34

Source: - (1) Divisional Forest Officer (T), Jowai.
(2) Chief Forest Officer, Jaintia Hills Autonomous District, Jowai.

Table: 10.02

Distribution (Classification) of Recorded Forest Area 2006-2007 & 2007-2008

Sl. No.	Year	Unit	Reserved Forest	Protected Forest	Unclassed Forest	Total Forest Area
1	2	3	4	5	6	7
1	2006-2007	Hect.	311.67	2191.81	-	2503.48
2	2007-2008	Hect.	311.67	2191.81	-	2503.48

Source: - (1) Divisional Forest Officer (T) Jowai.
(2) Chief Forest Officer, Jaintia Hills Autonomous District, Jowai.

Table: 10.03

**Out Turn and Value of Major Forest Production in District,
Out Turn In Cubic Metre (Value in Rs.)**

Sl.No.	Particulars	Units	2005-2006	2006-2007
1	2	3	4	5
1	Timber			
	(a) Out turn	M3	N.A	685.481
	(b) Value	Rs.	N.A	16,89,710
2	Firewood			
	(a) Out turn	M.T	N.A	N.A
	(b) Value	Rs.	N.A	N.A
3	Minor Forest Product			
	1.Stone and sand			
	(a) Out turn	M3	N.A	N.A
	(b) Value	Rs.	1,76,302,50	2,20,98,913
	2.Limestone			
	(a) Out turn	M.T	N.A	N.A
	(b) Value	Rs.	N.A	N.A

Source: - Divisional Forest Officer (T) Jowai.

FISHERY

Table: 11.01

Production and Price of Inland Fish

Sl. No.	Year	Production (MT)	Price Per MT.	Value Rs.In Lakhs.
1	2	3	4	5
1	2006	402	70,000	281.4
2	2007	278	70,000	194.6
3	2008	60.6	60,000	36.3

Source: Superintendent of Fisheries.

Table: 11.02

Fish Seed Distribution

Sl. No	Year	Unit (Nos)	Fish seed Distribution
1	2	3	4
1	2006	20	40,000
2	2007	40	59,000
3	2008	20	1,20,000(Departmental)
		91	2,25,000(Brought from Outside)

Source: - Superintendent of Fisheries.

Table: 11.03

Fish Seed Farm Production of Spawn and Fry Fingerlings

Sl.No.	Particulars	Unit	2006	2007	2008
1	2	3	4	5	6
1	Fish seed farm	Nos	2	2	2
2	Nurseries areas	Hect.	0.5	0.5	0.5
3	Bheels and lake	Hect.	-	-	-
4	Total water area for composite fish farming	Hect.	7	7	7
5	Fry fingerlings	Million	0.040	0.059	0.012
6	Inland fish production both capture and culture fisheries	1000 tonnes	278	278	60.6

Source: - Superintendent of Fisheries.

MINING

Table: 12.01

Production and Value of Important Minerals

Sl.No.	Items	2005 – 2006		2006 – 2007		2007 – 2008	
		Production (M.T.)	Value (Rs.)	Production (M.T.)	Value (Rs.)	Production (M.T.)	Value (Rs.)
1	2	3	4	5	6	7	8
1	Coal	3889798	N.A.	4045710	N.A.	4359878	N.A.
2	Limestone	510432	N.A.	1332009	N.A.	1253947	N.A.
3	Sellimanite	-	-	-	-	-	-

Source: - Divisional Mining Officer, Jowai.

CO-OPERATIVE

Table: 13.01

Number of Co-operative Societies

Sl. No.	Particulars	2006	2007	2008
1	2	3	4	5
1	No. of Primary Agriculture Co operative Societies	17	171	17
2	No. of Dairy Farming Co operative Societies	23	23	23
3	No. of Piggery & Poultry Co operative Societies	9	9	9
4	No. of Marketing Co operative Societies	3	3	3
5	No. of Industrial Co operative Societies	3	3	3
6	No. of Joint Farming Co operative Societies	1	1	1
7	No. of Multi-Purpose Co operative Societies	33	33	36
8	No. of Women Co operative Societies	14	14	14
9	No. of Transport Co operative Societies	19	19	19
10	No. of C operative Urban Bank ltd.	1	1	1
11	No. of Mecofed Co operative Societies	2	2	2
12	No. of Handloom Co operative Societies	4	4	4
13	No of Co operative Apex Bank ltd	5	5	5
14	No. of Consumer's Co operative Societies	2	2	2
15	No. of Fishery Co operative	4	4	4
16	No. of Thrift & Credit Co operative	3	3	3
17	No. of Processing Co operative Societies	2	2	2
18	No. of Labour Contract Co operative Societies	1	1	1
19	No. of Livestock Co operative Societies	5	5	5
20	No. of Horticulture Co operative Societies	2	2	2

Source: - Asst. Registrar of Co- operative Societies, Jowai.

INDUSTRIES

Table: 14.01

Number of Small Scale Industries Registered, Number of Persons Employed and Plant and Machinery (in Lakhs)

Sl. No.	Particulars	2006			2007		
		No. of Small Scale Industries	No. of Persons Employed	Plant & Machinery (in Lakhs)	No. of Small Scale Industries	No. of Persons Employed	Plants & Machinery (in Lakhs)
1	2	3	4	5	6	7	8
1	Betel nut Preservation	16	30	34.36	14	34	27.48
2	Automobile	2	13	2.04	6	52	15.31
3	Dry fish	2	5	3.06	1	3	1.50
4	Steel Fabrication	2	7	0.68	1	4	0.29
5	Bakery	4	21	5.51	3	13	3.03
6	Cane & Bamboo	6	8	0.63	1	1	0.15
7	Modern Tiles	1	15	6.67	-	-	-
8	Furniture	1	9	0.50	-	-	-
9	Tailoring	3	8	0.43	4	9	0.40
10	Weaving	1	4	0.05	-	-	-
11	Cable Network	1	5	1.91	1	6	12.00
12	Candle Work	1	3	0.12	-	-	-
13	Ice Cream	2	6	3.49	-	-	-
14	Photo Stat & Lamination	1	3	2.00	-	-	-
15	Weigh Bridge	1	4	11.79	-	-	-
16	Blacksmith	-	-	-	6	25	0.98
17	P.C.O. cum-Xerox	-	-	-	1	2	1.68
18	Minerals	-	-	-	1	12	20.00
19	Vermi Compost	-	-	-	2	9	1.45
20	Beauty Parlour	-	-	-	3	9	0.85
21	Footwear	-	-	-	1	3	0.50
22	Spices	-	-	-	1	5	2.02
23	Printing Press	-	-	-	1	9	11.41
24	Rice Dehusting-	-	-	-	1	2	0.71
25	Book binding cum-Printing	-	-	-	1	4	1.51

Source: - General Manager, District Industries Centre, Jowai.

LABOUR AND EMPLOYMENT

Table: 15.01

Registration and Employment through Divisional Employment Exchange

Sl.No	Particulars	2006	2007	2008
1	2	3	4	5
1	Number of application on live register as on 31 st March	4957	4210	3398
2	Number of applicant registered	1983	956	1141
3	Number of Scheduled Tribes	1983	954	1136
4	Number of Scheduled Castes	-	2	5
5	Number of Vacancies Notified	14	19	13
6	Number of Placements	-	10	3
7	Total	8937	6151	5696

Source: - Employment Officer, Jowai.

Table: 15.02

Number of Employment in Public Sector

Sl.No.	Particulars	2006	2007	2008
1	2	3	4	5
1	Agriculture, Hunting Forestry and Fishing	145	145	146
2	Minning and Quarry	-	-	-
3	Manufacturing	-	-	-
4	Electricity, Gas and Water	309	309	311
5	Construction	392	399	394
6	Wholesale and Retail Traded Restaurants and Hotels	34	34	36
7	Transport Storage and Communications	20	20	22
8	Financing Insurance, Real Estate and Business Services	78	78	15
9	Community, Social and Personal Services	432	432	424
10	Total	1410	1417	1348

Source: - Employment Officer, Jowai.

Table: 15.03

Number of Employment in Private Sector

Sl.No.	Particulars	2006	2007	2008
1	2	3	4	5
1	Mining and Quarrying	-	-	-
2	Manufacturing	227	148	149
3	Construction	-	-	-
4	Transport Storage and Communications	-	-	-
5	Financing Insurance, Real Estate and Business Services	9	9	-
6	Wholesale and Retail traded Restaurants and Hotels	-	-	-
7	Community, Social and Personal Services	-	-	-
8	Total	236	157	149

Source: - Employment Officer, Jowai.

ROAD AND TRANSPORT

Table: 16.01

Road Length

Sl.No.	Particulars	Unit	2006	2007	2008
1	2	3	4	5	6
1	A. National Highways:				
	1.Black Topped Roads	Kms	185.20	185.20	185.20
	2.Metalled & Gravelled Roads	Kms	-	-	-
2	B. State Highways:				
	1.Black Tooped Roads	Kms	109.00	138.80	138.80
	2.Metalled & Gravelled Roads	Kms	-	-	-
	3.All weather Motorable Roads	Kms	-	-	-
	4.Non-Motorable Roads	Kms	-	-	-
	5.Cement Concrete Roads	Kms	-	-	-
3	C. Other District Roads:				
	1.Black Topped Roads	Kms	609.113	622.963	622.963
	2.Metalled & Gravelled Roads	Kms	131.240	139.657	139.657
	3.Earthern Roads	Kms	536.636	570.497	570.479
	4.Non-Motorable Roads	Kms	-	-	-
	5.Footpaths	Kms	45.662	45.622	45.662

Source: - 1) E.E. P.W.D N.E.C. Division.
 2) E.E. P.W.D. North Division.
 3) E.E. P.W.D. Central Division.
 4) E.E. P.W.D. South Division
 5) E.E. P.W.D. P.M.G.S. Y.

Table: 16.02

Registration of Vehicles by Class of Ownership

Sl. No.	Particulars	2005			2006			2007		
		Govt.	Private	Total	Govt.	Private	Total	Govt.	Private	Total
1	2	3	4	5	6	7	8	9	10	11
1	Truck	2	233	235	-	211	211	-	138	138
2	Bus	-	11	11	-	11	11	-	12	12
3	Car	1	212	213	-	261	261	-	255	255
4	Jeep	4	91	95	-	56	56	-	10	10
5	Trailer	1	9	10	-	10	10	-	1	1
6	Earth Mover	-	3	3	-	12	12	-	9	9
7	Power Tiller	-	-	-	-	-	-	-	-	-
8	Motor Cycle	-	94	94	-	174	174	-	155	155
9	Scooter	2	40	42	-	10	10	-	3	3
10	Taxi Cab	-	299	299	-	48	48	-	48	48
11	Tractor	-	7	7	-	9	9	-	5	5
12	Three Wheeler	-	9	9	-	8	8	-	6	6
13	Maxi Cab	-	-	-	-	167	167	-	156	156
14	Others	-	64	64	6	82	88	6	150	156
15	Total	10	1072	1082	6	1059	1065	6	948	954

Source: - District Transport Officer, Jaintia Hills District, Jowai.

Table: 16.03

Number of Road Accident, Number of Person Killed and Injured

Sl. No.	Year	Units	Accidents	Killed	Injured
1	2	3	4	5	6
1	2006	Nos.	45	37	82
2	2007	Nos.	33	26	79
3	2008	Nos.	27	14	59

Source: - Superintendent of Police, Jowai.

COMMUNICATION

Table: 17.01

Number of Telegraph and Post Office

Sl.No.	Particulars	2006	2007	2008
1	2	3	4	5
1	Telegraph Office (a) Head Office (b) Branch Office	- -	- -	- -
2	Post Office (a) Head Office (b) Sub- Office (c) Branch Office (d) Office of Inspector	- 4 57 1	- 4 61 1	- 5 71 1

Source: - Inspector of Post Office, Jowai.

Table: 17.02

Number of Telephone Exchange and Telephone Subscribers

Sl.No.	Years	No. of Exchanges	No. of PCO	No. of Subscriber Land Line	No. of Subscriber WLL	No. of Subscribers Mobile Phone
1	2	3	4	5	6	7
1	2006	11	286	5993	1364	N.A
2	2007	18	200	5400	1225	4500
3	2008	18	269	5851	1770	8139

Source: - Sub-Divisional Engineer (P) Jowai.

TOURISM

Table: 18.01

Number of Tourist Spot and Tourist Visiting

Sl. No.	Particulars	As on 31st December		As on 31st September
		2006	2007	2008
1	2	3	4	5
1	Number of Tourist Spot	6	10	10
2	Number of Tourist Visiting			
	a) Indian	N.A	128	323
	b) Foreign	N.A	N.A	22
	c) Total	N.A	128	345

Source: - Tourism Officer, Jaintia Hills, Jowai.

ELECTION

Table: 19.01

Election to the Meghalaya Legislative Assembly, Jaintia Hilla District

Sl.No.	Particulars	2008
1	2	4
1	Seats	28
2	Electorate	158899
3	Total Votes Polled	146589
4	Valid Votes	148076
5	Votes Rejected	1487

Source: Deputy Commissioner (Election), Jowai.

Table: 19.02

Total Number of Votes polled during the last Legislative Assembly Election 2008

Sl.No.	Name of Constituencies	Votes Polled
1	2	3
1	War Jaintia	18943
2	Rymbai	26914
3	Sutnga Shangpung	19248
4	Raliang	23003
5	Nartiang	20115
6	Nongbah Wahiajer	20645
7	Jowai	19208

Source: - Deputy Commissioner (Election), Jowai.

Table: 19.03

Number of Candidates in the Election to the Meghalaya Legislative Assembly, Jaintia Hills District

Sl.No.	Parties	2008
1	2	3
1	Congress	7
2	Bharatiya Janata Party	1
3	National Congress Party	4
4	United Democratic Party	7
5	Hill State People Democratic Party	3
6	Independents	0
7	KHNAM	3
8	Lok Janata Party	1

Source: - Deputy Commissioner (Election), Jowai.

Table: 19.04**Number of Candidates who contested to the Meghalaya Legislative Assembly**

Name of Constituency	Name of Candidates with their respective political parties	Votes polled in their favour
1	2	3
1. War Jaintia	Junior Lamin BJP	109
	Lahkmen Rymbui (E) INC	6896
	Paul Lamin NCP	3230
	Riang Lenon Tariang UDP	5996
	Camillus Albert Lamin KHNAM	2613
	Sevenson Dhar LJP	99
2. Rymbai	Balios Swer UDP	1980
	Nehlang Lyngdoh (E) INC	12893
	Simon Shiangshai NCP	5856
	Obil Kyndait HSPDP	3853
	Tariang Massar KHNAM	2332
3. Sutnga Shanpung	Richard Sing Lyngdoh UDP	7938
	Shitlang Pale (E) INC	9814
	Bison Paslein KHNAM	1496
4. Raliang	Comingone Ymbon (E) INC	12756
	Mihsalan Suchiang UDP	6913
	Smt. Rita M.V. Lyngdoh MDP	3334
5. Nartiang	E.C Boniface Bamon (E) NCP	7120
	Draison Kharshiing INC	6669
	Henry Lamin UDP	3799
	H. Britainwar Dan HSPDP	2527
6. Nongbah Wahiajer	Edmund Speakerson Lyngdoh MDP	5119
	Sniawbhalang Dhar (E) INC	8452
	Thaw Ain Plain UDP	6973
	Darling Wavel Lamare HSPDP	101
7. Jowai	Moonlight Pariat NCP	4377
	Roytre Christopher Laloo INC	7712
	Sing Mullieh UDP	7119

Source: - Deputy Commissioner (Election), Jowai.

Table: 19.05**Election to the Jaintia Hills Autonomous District Council 2004**

Sl.No.	Particulars	2004
1	2	3
1	Seats	29
2	Electorates	177967
3	Total Votes Polled	149309
4	Valid Votes	147409
5	Votes Rejected	1900

Source: - Deputy Commissioner (Election), Jowai.

ELECTRICITY

Table: 20.01

Number of Villages Electrified

Sl. No.	Particulars	Villages Electrified	
		2006	2007
1	2	3	4
1	Thadlaskein	7	3
2	Laskein	6	2
3	Khliehriat	16	7
4	Amlarem	4	Nil
5	Total	33	12

Sl. No.	Particulars	2006	2007
1	2	3	4
1	Installed Capacity (KVA)	1426	266
2	Generating Capacity (MKWH)	-	-
3	Per Capita Consumption (KWH)	-	-

Source: - Executive Engineer, Me.S.E.B, Jowai.

EXCISE

Table: 21.01

Consumption of Indian made Liquor, Local Liquor

Sl. No.	Items	Unit	2006	2007
1	2	3	4	5
1 a	Local Liquor (Patta only) Number of Patta Shops	Nos.	230	232
2 b	Indian made Foreign Liquor Number of Shops	Nos.	82	90
3	Indian made Foreign Liquor consumed	Litres	N.A	N.A

Source: - Superintendent of Excise, Jowai.

SUPPLY

Table: 22.01

Number of Fair Price Shops

Sl. No.	Particulars	Units	2006	2007
1	2	3	4	5
1	Fair Price Shops	Nos.	196	197
2	Commodities Distributed			
	a) Rice			
	1) APL	M.T	3100.20	3206.40
	2) BPL	M.T	2298.996	2259.18
	3) AAY	M.T	946.344	986.16
	b) Sugar	M.T	566.60	750.80

Source: - Deputy Commissioner (Supply) Jaintia Hills District, Jowai.

FINANCE

Table: 23.01

Collection of Excise, Revenue, Sales Tax, Taxes on Petroleum , Motor Spirit etc.

Sl. No.	Items	2005	2006	2007
1	2	3	4	5
1	Profession, Trades calling and Employment Tax Act.	Nil	Nil	Nil
2	Central Sales Tax Act.	3,98,94,726.00	1,31,96,669.00	1,21,15,134.00
3	Meghalaya Finance Sales Tax Act.	46,43,619.00	16,59,202.00	13,742.00
4	Meghalaya Sales Tax	96,43,720.00	2,99,102.00	104.00
5	Motor Spirit and Lubricants	3,05,315.00	4,74,885.00	50,500.00
6	Meghalaya Passenger and Goods Tax	21,05,286.00	20,96,728.00	21,50,007.00
7	Electricity Duty Act	Nil	Nil	Nil
8	Amusement and Betting Tax Act	5,33,882.00	3,85,151.00	3,63,025.00
9	Total	5,65,92,666.00	1,81,11,737.00	1,46,92,512.00

Source: - Superintendent of Taxes, Jowai.