

**BIO- RESOURCES DEVELOPMENT CENTRE
(BRDC)
SHILLONG**

GENERAL INFORMATION ABOUT THE CENTRE

1. Name : Bio-Resources Development Centre (BRDC).
2. Address : Opp. Indo Danish Project, 5 ½ Mile, Upper Shillong, Shillong – 793 009
3. Nodal Officer : Member-Secretary, BRDC, Shillong. C/O. SCSTE, Meghalaya, Lower Lachumiere, Shillong-793001
Ph. No. - (0364) 2505511 (off.), (0364) 2521828 (Res.)
4. Constitution : Constituted by Government of Meghalaya and registered under Societies Registration Act, 1983.
5. Mission : To ensure meaningful conservation and sustainable utilization of the bio-resources of the State.
6. Function : To undertake research, field experimentation and Development of value added products/technologies for conservation and sustainable utilization of bio-resources of the State.
7. Head : Chairman
8. Functional Authority : Chairman
9. Chief Executive Officer : Scientist-in-Charge
10. Type of Organisation : Autonomous registered society of the State Government
11. Composition of the Organisation : (i) [Governing Council](#) (ii) [Centre](#).
12. Organisational Structure : [Annexure I](#)
13. Composition of the Governing Council : [Annexure II](#)
14. Manpower Structure : [Annexure III](#)
15. About the Centre : The Centre is manned by a core-staff comprising of scientific, technical and administrative personnel headed by a Scientist-in-Charge. The Centre identifies, formulates, executes/co-ordinates and follows-up projects on various aspects of conservation and sustainable utilisation of bio-resources of the State. Besides the core-staff, a number of project staff are engaged by the Centre from time to time for execution of various projects of the Centre.

**15. Controlling Authority
of the State Govt.**

: Planning Department, Govt. of Meghalaya

16. Funding

: The Centre is funded by Planning Department(S&T), Govt. of Meghalaya and Department of Biotechnology (DBT), Govt. of India.

OBJECTIVES

- * Genetic improvement/up-gradation and multiplication of horticultural and medicinal plants.
- * Improvement and health care of livestock.
- * Germplasm collection of non-mulberry silk moths and their wild relatives for genetic enhancement.
- * Development of human resource in biotechnology.
- * Collection, conservation, breeding, improvement and multiplication of orchids.
- * Multiplication and marketing of ornamental plants.
- * Ex-situ conservation, improvement, agro-technologies and sustainable use of medicinal plants.
- * Development of bio-informatics system.
- * Providing opportunity for training in bio-technology relevant to the activities of the Centre.

PROGRAMMES

- Horticultural Resources Development Programme.
- Medicinal plant Resources Development Programme.
- Human Resources Development Programme.

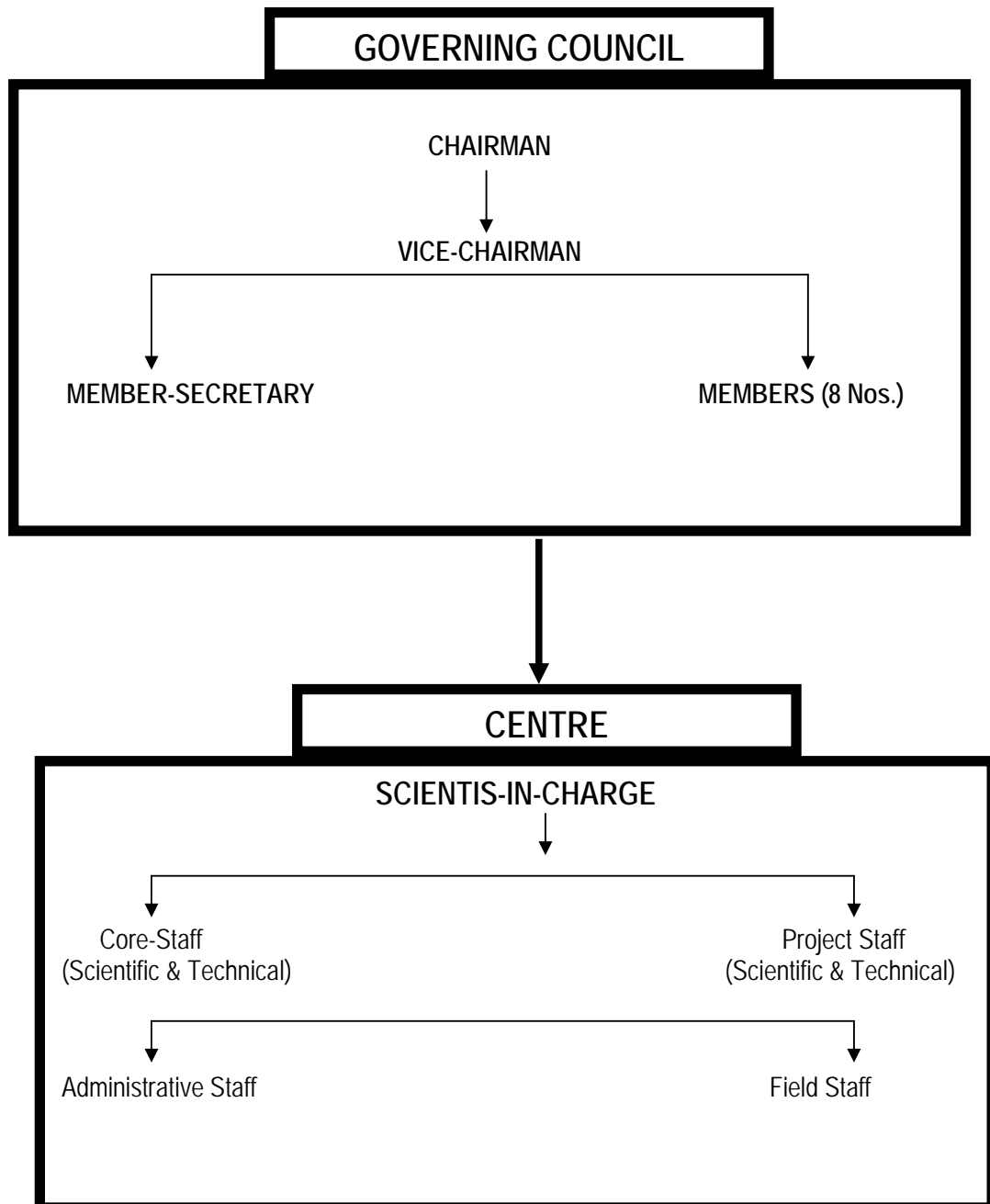
CURRENT PROJECTS

The Centre is currently taking-up a project sponsored by Department of Bio-technology (DBT), Ministry of Science & Technology, Govt. of India titled- "Conservation & Sustainable Utilization of Bio-Resources of Meghalaya at BRDC

**BIO-RESOURCES DEVELOPMENT CENTRE
(BRDC)
SHILLONG**

ANNEXURE-I

ORGANISATIONAL STRUCTURE



**BIO-RESOURCES DEVELOPMENT CENTRE
(BRDC)
SHILLONG**

ANNEXURE- II

COMPOSITION OF THE GOVERNING COUNCIL

- | | | |
|---|---|-------------------------------------|
| 1. Chief Secretary, Meghalaya | - | Chairman |
| 2. Principal Secretary/ Commissioner & Secretary,
Planning (S&T), Meghalaya. | - | Vice-Chairman |
| 3. Principal Secretary/ Commissioner & Secretary/
Secretary, Forest, Meghalaya. | - | Member |
| 4. Principal Secretary/ Commissioner & Secretary/
Secretary, Agriculture, Meghalaya. | - | Member |
| 5. Representative of Department of Biotechnology,
Govt. of India. | - | Member |
| 6. Representative of Department of Science &
Technology, Govt. of India. | - | Member |
| 7. Scientist-in-Charge, Botanical Survey of India,
Shillong. | - | Member |
| 8. Scientist-in-Charge, Zoological Survey of India,
Shillong. | - | Member |
| 9. Dean, Life Science, NEHU, Shillong | - | Member |
| 10. Director, ICAR, NEH Complex, Umiam,
Meghalaya. | - | Member |
| 11. Member- Secretary | - | Project Director, S&T, Meghalaya |
| 12. Member-Assistant Secretary. | - | Member-Secretary, SCSTE, Meghalaya. |

**BIO- RESOURCES DEVELOPMENT CENTRE
(BRDC)
SHILLONG**

Annexure III

MANPOWER STRUCTURE

