

SHILLONG SCIENCE CENTRE

GENERAL INFORMATION ABOUT THE CENTRE

1. **Name** : Shillong Science Centre.
2. **Address** : North Eastern Hills University (NEHU) Permanent Campus, Mawlai Mawkynroh, Shillong-793022.
3. **Nodal Officer** : Member-Secretary, Shillong Science Centre, C/o. SCSTE, Meghalaya, Lower Lachumiere, Shillong-793001, Ph. No. - (0364) 2505511 (off.).
4. **Constitution** : Constituted by Government of Meghalaya and registered under Societies Registration Act, 1983.
5. **Mission** : To popularise science and to inculcate scientific temper among the general masses.
6. **Function** : To create infrastructure and facilities and undertake programmes to explain science to the general masses with a view of inculcating a scientific temper in them.
7. **Head** : Chairman
8. **Functional Authority** : Chairman
9. **Chief Executive Officer** : Curator
10. **Type of Organisation** : Autonomous registered society of the State Government
11. **Composition of the Organisation** : (i) [Governing Council](#) (ii) [Centre](#)
12. **Composition of the Governing Council** : [Annexure I](#)
13. **About the Centre** : The Centre is manned by a team of scientific, technical and administrative personnel headed by the Curator. The Centre creates facilities, activities and conduct programmes to explain science to the general masses, particularly school children.
14. **Organisation Structure** : [Annexure II](#)
15. **Controlling Authority of the State Govt.** : Planning Department, Govt. of Meghalaya
16. **Funding** : The Centre is funded by the Govt. of Meghalaya.

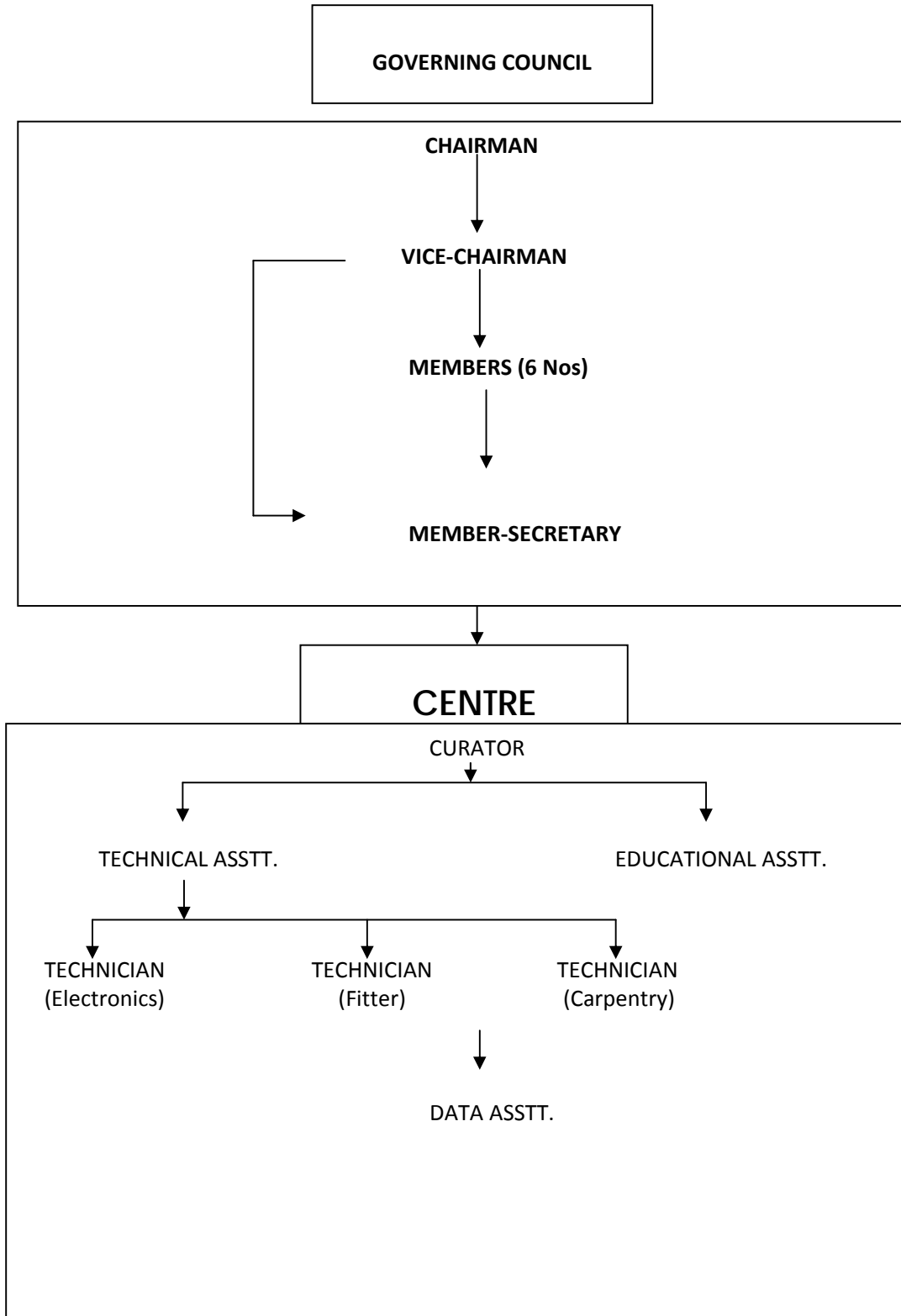
OBJECTIVES

- (i) To develop a scientific temper amongst the general public, particularly school children, by inculcating a spirit of inquiry and fostering creative talent through activity- based learning process incorporating method of science.
- (ii) To encourage critical analysis and understanding of local problems in science & technology, environment, health and hygiene etc. and to work towards finding a solution to these problems.
- (iii) To disseminate information related to scientific and technological topics relevant to the State of Meghalaya in particular and the country in general.
- (iv) To promote creative activities in school to supplement formal science education.
- (v) To highlight important and relevant topical issues in science and technology and to popularise them for the benefit of the community.
- (vi) To develop scientific exhibits, temporary exhibitions, kits and aids for use in the Centre and in other science centres/programmes in order to portray the development in science and technology.

FACILITIES IN THE SHILLONG SCIENCE CENTRE

- * Science Galleries – Two Science Galleries, namely, Water Gallery and Fun Science Gallery, have been set-up in the Centre and these Galleries house a number of interactive and passive science exhibits.
- * Science Auditorium - A small Auditorium is housed inside the main building of the Centre where regular science awareness/promotional programmes are conducted from time-to-time.
- * Science Park – A Science Park has been set-up in the premises of the Centre where a good number of outdoor active and interactive science exhibits, gadgets and models are installed.
- * 3D Theatre – The Centre has recently set up a 3D Theatre in the Auditorium, which is capable of producing a 3D special effects to enhances the illusion of depth perception,as regards to the movies that the Visitors may see.
- * Appropriate Technology Corner – A separate corner for displaying and demonstrating various kinds of appropriate technologies useful to the public has been set-up behind the main building of the Centre.

ORGANISATIONAL STRUCTURE



SHILLONG SCIENCE CENTRE

Annexure II

COMPOSITION OF THE GOVERNING COUNCIL

1. Chief Secretary, Meghalaya – Chairman
2. Principal Secretary/ Commissioner & Secretary,
Planning (S&T), Meghalaya. - Vice-Chairman
3. Principal Secretary/ Commissioner & Secretary/
Secretary, Personnel & AR Meghalaya. – Member
4. Principal Secretary/ Commissioner & Secretary/
Secretary, Education, Meghalaya. – Member
5. Principal Secretary/ Commissioner & Secretary/
Secretary, IPR, Meghalaya. – Member
6. Principal Secretary/ Commissioner & Secretary/
Secretary, Information Technology, Meghalaya. – Member
7. Representative of National Council of Science,
Museums, Kolkata. – Member
8. Registrar, NEHU, Shillong – Member
9. Project Director, S&T Meghalaya - Member-Secretary

OPENING HOURS:

Monday to Saturday
(Except Sunday and State Government Holidays)

From 10:00 AM to 5:00 PM (During Summer)

From 10:00 AM to 4:30 PM (During Winter)

ENTRANCE FEE:

Rs.10/- per head for general public

Rs.5/- per head for students