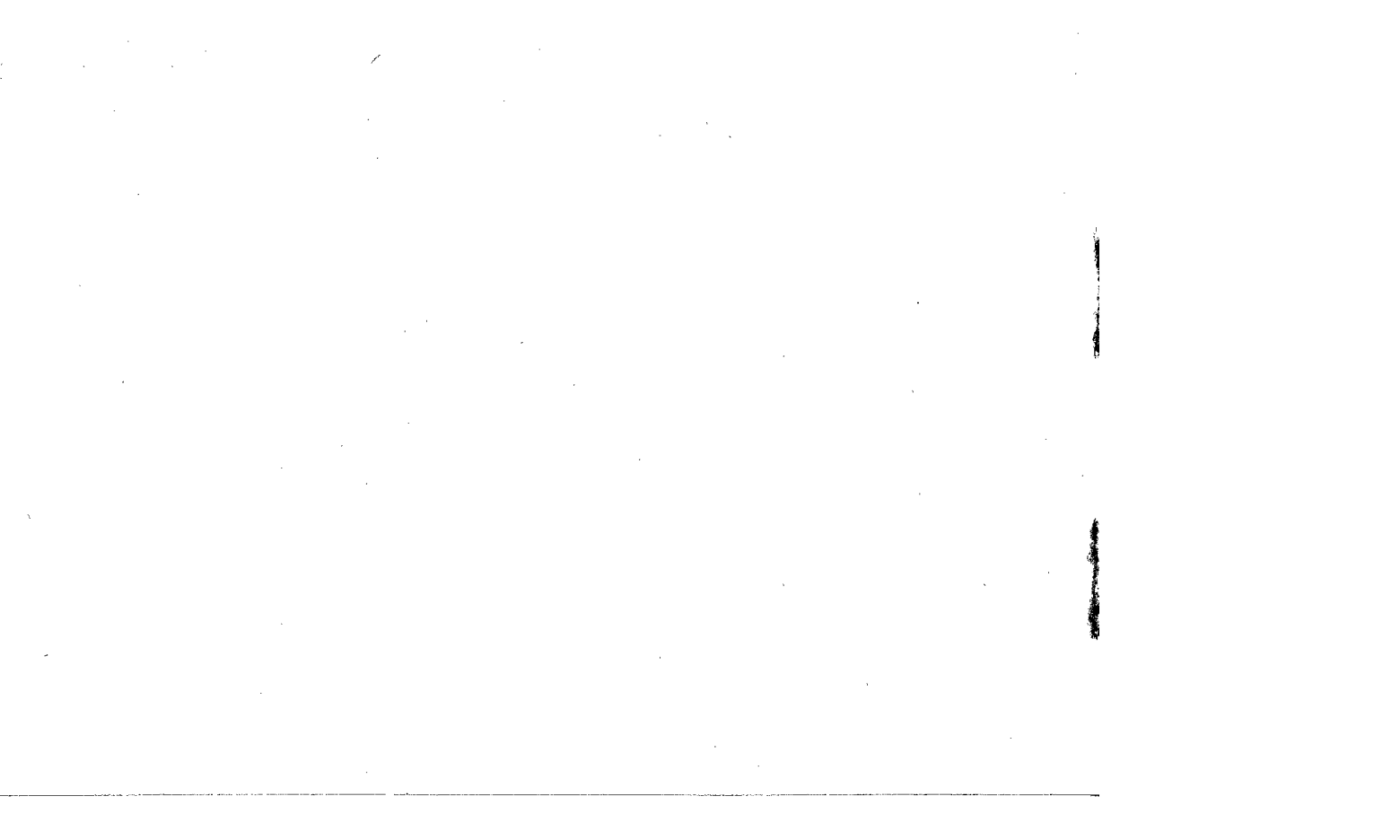


# MEGHALAYA AT A GLANCE

1988

Issued by  
DIRECTORATE OF ECONOMICS, STATISTICS AND EVALUATION  
MEGHALAYA, SHILLONG



I AREA AND ADMINISTRATIVE UNITS

District	Geographical Area, 1981 (sq.kms)	Sub-Divisions, 1988 (other than Dist.H.Q) (Nos)	C.D. Blocks 1988 (Nos)	Towns, 1981 (Nos)	Villages, 1981 (Nos)	Houses, 1981 ('000) (Nos)	Police Stations, 1988 (Nos)	Police Out-posts, 1988 (Nos)
(1)	(2)	(3)	(4)	(5)	(6)	(7)	(8)	(9)
E.K.H.	5196	2	9	7	1189	100	7	9
W.K.H.	5247	2	4	1	710	29	3	2
J.H.	3819	2	4	1	404	28	2	5
E.G.H.	2603	1	4	1	656	26	3	2
W.G.H.	5564	3	9	2	1943	73	5	9
MEGHALAYA	22429	10	30	12	4902	256	20	27

N.B. - E.K.H. - East Khasi Hills, W.K.H. - West Khasi Hills

J.H. - Jaintia Hills, E.G.H. - East Garo Hills,

W.G.H. - West Garo Hills

10. Autonomous District Councils (1988)

No. of M.D.C.

a. Shillong	30
b. Jowai	23
c. Garo Hills	30
d. Lok Sabha Constituencies (1984)	2
e. Assembly Constituencies (1988)	60

II POPULATION, 1981 (in '000' Nos)

District	Total	Male	Female	Rural	Urban	Sche- -du- led Trib- es	Sche- -dul- ed Cas- tes	Den- sity (Per sq. km.)	Decen- -nial Growth (P.C.)
	(1)	(2)	(3)	(4)	(5)	(6)	(7)	(8)	(9)
E.K.H.	511	263	248	331	180	374	1480	98	34.35
W.K.H.	162	83	79	158	4	157	-	31	45.76
J.H.	156	79	77	143	13	149	47	41	37.72
E.G.H.	137	71	66	132	5	124	144	52	32.96
W.G.H.	370	188	182	330	40	272	3851	66	21.70
MEGHALAYA	1336	684	652	1095	241	1076	5492	60	32.04

10. Working Population, 1981 (in '000' Nos)						
District	Culti- vators	Agri- cultu- ral bourers	House- hold- Indus- try	Other workers	Margi- nal workers	Non-wor- kers.
	(a)	(b)	(c)	(d)	(e)	(f)
E.K.H.	74	25	3.0	106	5	299
W.K.H.	72	4	0.1	5	2	79
J.H.	51	9	0.5	16	1	79
E.G.H.	45	4	0.3	6	7	74
W.G.H	121	16	1.1	21	18	191
MEGHALAYA	363	58	5.0	154	33	722

<u>11. Literacy (1981)</u>	<u>P.C.</u>
1. Total	34.08
2. Rural	27.45
3. Urban	64.12
4. Male	37.89
5. Female	30.08
6. Total	34.08
12. Mid-year Estimated Population 1988 ('00' Nos)	16372
13. Birth rate, 1986 (Per mille)	39.1
14. Death rate, 1986 ( Per mille)	12.7

### III. AGRICULTURE

A. <u>Land utilisation, 1980-81</u>	'000 Hectares.
(1) Total geographical area	2249
(2) Forest	812
(3) Net area sown	193
(4) Area sown more than once	31
(5) Total area under crops.	224
(6) Gross irrigated area	51
B. <u>Area under important crops, 1987-88</u>	'000 Hectares.
(1) Rice	108.5
(2) Maize	19.0
(3) Potato	18.7
(4) Jute	4.8
(5) Cotton	6.9
(6) Rape and Mustard	6.8



C. Production of principal crops, 1987-88 '000 Metric Tonnes

(1) Rice	110.5
(2) Maize	20.7
(3) Potato	145.4
(4) Jute (in '000 bales of 180 Kgs)	37.2
(5) Cotton (in '000 bales of 170Kgs)	4.2
(6) Rape and mustard	4.1

D. Yield rate of :- (1987-88) Kgs. Per Hectare

(1) Rice	1018
(2) Maize	1089
(3) Potato	7775
(4) Jute	1395
(5) Rape and mustard	603

<u>E. Area under horticultural Crops, 1987-88.</u>	Hectares
(1) Pineapple	7917
(2) Citrus fruits	6269
(3) Temperate fruits	648
(4) Banana	4700
(5) Papaya	400

<u>F. Production of horticultural crops, 1987-88</u>	'000 Metric Tonnes
(1) Pineapple	61
(2) Citrus fruits	38
(3) Temperate fruits	3
(4) Banana	58
(5) Papaya	4

G. Consumption of fertilizers,      Metric Tonnes  
1987-88

(1) Kharif season	1816
(2) Rabi season	1485

H. Operational holdings, 1980-81

(1) Number of operational holdings	170270
(2) Average size of operational holding (Hectares)	1.74

<u>I. Percentage of households</u> <u>doing jhum cultivation, 1981</u>	<u>P.C.</u>
East Khasi Hills	7.01
West Khasi Hills	12.44
Jaintia Hills	11.47
East Garo Hills	33.84
West Garo Hills	40.28
MEGHALAYA	20.21

IV. ANIMAL HUSBANDRY AND VETERINARY

A. <u>Livestock Population (1982)</u>	'000' Nos
1. Cattle	
a. Total	550
b. Crossbreed	18
c. Indigenuous	532
2. Poultry	1419
3. Goats	186
4. Sheep	26
5. Pigs	206
6. Other Livestock	49

B. <u>Veterinary Institutions (1986-87)</u>	Nos
1. Hospitals	1
2. Dispensaries	48
3. Vety. Aid Centres	51
4. Key village centres	2
5. Artificial Insemination centres	2
6. Stockmen centres	78
7. Vety. Doctors   Surgeons	109

C. Government Farms (1986-87)

Nos

1. Cattle

3

2. Poultry

10

3. Pig

9

4. Goat

1

V. FISHERIES (1987-88)

Government Fish Seed Farms

11

VI. SOCIAL WELFARE, 1986-87	Nos.
1. <u>Integrated Child Development Scheme</u>	
(a) Units	16
(b) Beneficiaries	51498
2. <u>Special Nutrition Development Programme</u>	
(a) Centres	1035
(b) Beneficiaries	56698
3. <u>Physically Handicapped</u>	
(a) Beneficiaries	172



VII. FOREST (1985-86)

'000 Hectares

A. Area

1. Total forest	851.38
(a) Reserved Forest	71.07
(b) Protected Forest	1.13
(c) Unclassed Forest	752.44
(d) National Parks	26.74
2. Area under :-	Hectares
(a) Plantation   Afforestation	620
(b) Social Forestry	2768
3. Forest Roads (Kms.)	417

B. Value of forest Products(1985-86) '000 'Rs.

1. Timber	1190
2. Firewood	4

VIII. SERICULTURE AND WEAVING (1986-87)	Nos
1. Sericultural villages	1692
2. Families engaged in sericulture	9600
3. Sericultural farms	8
4. Eri seed grainages	4
5. Silk reeling units	6
6. Production of Cocoons	'000' Kgs.
(a) Mulberry	6.19
(b) Eri	100.52
(c) Muga (Lakh Nos)	30.79
(d) Tassar ('000 Nos)	34.40

IX. COOPERATION 1986-87, (P)	Nos.
1. Cooperative societies	646
2. Membership	115865
3. Share capital (Rs. in lakhs)	503.70
4. Working capital (Rs. in lakhs)	1617.70
X. ELECTRICITY, 1987-88	
1. Installed capacity (MW)	133.76
2. Generation (MKWH)	462.069
3. Per capita consumption (KWH)	92.14
4. Villages Electrified (Nos)	1622

---

XI. INDUSTRY, 1987-88	Nos.
1. Factories registered under factories act.	
(a) Numbers	58
(b) Employees	3068
2. Small Scale Industries registered with the Director of Industries	
(a) Numbers	970
(b) Employees	5997
3. Non-Agril. Establishments (1980)	
(a) Numbers	29857
(b) Persons usually working	101906
4. Khadi & Village Industries	
(a) No. of centres	291
(b) Employment	4947

XII. LABOUR AND EMPLOYMENT	Nos
1. Employment in :- (30.6.88)	
A. Public sector	57392
(1) Central Government	11610
(2) State Government	29685
(3) Central Quasi Government	6629
(4) State Quasi Government	7358
(5) Local bodies	2110
B. Private sector	4336
2. Employment Exchanges (30.9.88)	7
3. Applicants on live register (30.9.88)	20558

XIII. ROAD AND TRANSPORT

<u>Road length(P.W.D.), 1987-88.</u>	<u>Kms.</u>
1. Surfaced	2295.32
2. Unsurfaced	3103.99
3. Total	5399.31
4. National Highway, 1986-87	460.00
5. Major District Roads, 1986-87	1072.10
6. State Highway, 1986-87	916.80
7. Other District Roads, 1986-87	2769.70
8. No. of vehicles on Roads as on 31.3.86	16194

XIV. COMMUNICATIONS, 1987-88	Nos.
1.General Post Office	1
2.Head Post Office	1
3.Sub Post Offices	59
4.Branch Post Offices	356
5.Newspapers and periodicals	60

XV. HEALTH, 1986 (in Nos)

District	Govt. Hospi- tals	Govt. Dis- pensa- ries	Prima- ry Health Centres	Sub- Centres	Beds in Govt. Hos- pitals and P.H.C.
(1)	(2)	(3)	(4)	(5)	(6)
E.K.H.	3	13	11	39	1095
W.K.H.	-	2	5	24	42
J.H.	1	6	6	40	113
E.G.H.	1	6	6	42	142
W.G.H.	2	9	11	44	30
MEGHALAYA	7	36	39	189	1422



## XVI. EDUCATION

## Educational Institutions and Enrolment, 1985-86

District	Pre-Primary & Pre-Basic		Primary and Junior Basic		Middle and Senior basic	
	Institu- tions (Nos.)	Enrol- ment ( '000' Nos)	Institu- tions (Nos)	Enrol- ment ( '000' Nos)	Institu- tions (Nos)	Enrol- ment. ( '000' Nos)
(1)	(2)	(3)	(4)	(5)	(6)	(7)
E.K.H.	387	30	1058	69	214	13
W.K.H.	384	8	903	38	77	4
J.H.	78	3	378	18	68	4
E.G.H.	71	6	542	27	70	6
W.G.H.	160	8	1248	52	193	20
MEGHALAYA	1080	55	4129	204	622	47

	High Secondary		Higher Colleges		University	
	Institutions (Nos.)	Enrolment '000' (Nos)	Institutions (Nos)	Enrolment '00 (Nos)	Institutions (Nos)	Enrolment '00 (Nos)
(1)	(8)	(9)	(10)	(11)	(12)	(13)
E.K.H.	93	31	10	117	1	8
W.K.H.	26	4	1	1	-	-
J.H.	22	5	1	8	-	-
E.G.H.	32	6	1	3	-	-
W.G.H.	95	15	1	10	-	-
MEGHALAYA	268	61	14	139	1	8

XVII. BANKING June, 1988.

District	Regional Rural Banks			Scheduled Commercial Banks		
	Offices (Nos)	Deposits (Rs.in lakhs)	Credit (Rs.in lakhs)	Offices (Nos)	Deposit (Rs.in Lakhs)	Credit (Rs.in lakhs)
(1)	(2)	(3)	(4)	(5)	(6)	(7)
E.K.H.	19	395	188	66	20329	3836
W.K.H.	13	134	123	16	471	295
J.H.	11	149	32	18	1325	326
E.G.H.	-	-	-	11	355	160
W.G.H.	-	-	-	23	1623	455
MEGHALAYA	43	678	343	134	24103	5072

## XVIII. STATE INCOME, 1985-86

1.	<u>State Domestic Products</u>	Rs. in lakhs.
	(a) At current Prices	31534
	(b) At constant Prices (1970-71)	18061
2.	<u>Per capita state Domestic Product</u>	In Rs.
	(a) At current Prices	2077
	(b) At constant Prices (1970-71)	1190

XIX. STATE GOVERNMENT RECEIPTS AND EXPENDITURE (B.E.),  
1988-89

	Rs. in lakhs.
A. Revenue Receipts (Total)	29884.10
(1) Central Taxes	8010.00
(2) State Taxes	2057.90
(3) Non-Taxes Revenue	1458.07
(4) Grants in aid	18358.13
B. Revenue Expenditure (Total)	23033.91
(1) Economic Development	8378.92
(2) Social and Community Services	7691.37
(3) General Services	6963.62

## XX. ANTICIPATED PLAN EXPENDITURE, 1988-89. Rs. in lakhs

1. Agriculture and Allied Services	1975.00
2. Cooperation	140.00
3. Rural Development	286.24
4. Social and Community Services	3428.42
5. Special Area Programme (Border Areas Development)	210.00
6. Irrigation and Flood Control	310.00
7. Energy	3120.00
8. Industries and Minerals	680.00
9. Transport and Communications	2085.00
10. Science, Technology and Environment	20.00
11. General Economic Services	745.34
Total	13000.00

XXI. STATE TAXES (B.E), 1988-89

Rs. in Lakhs.

1. Professional tax	19.20
2. Land Revenue	9.00
3. Stamps and Registration	54.00
4. State Excise	484.00
5. Sale tax	1208.00
6. Taxes on vehicles	122.00
7. Taxes on goods and passengers	50.00
8. Taxes and duties on electricity	12.00
9. Taxes on entertainment including taxes on betting	60.70
10. Purchase tax	39.00
Total	2057.90

## XXII. INDEX NUMBERS

Period	Consumer Price Index Numbers for		
	Urban Non-Manual Employees (Base 1960= 100) Shillong	Agricultural Labourers (Base July 1960-June '61 = 100) Assam (including Meghalaya)	Industrial workers (Base 1960=100) All India
(1)	(2)	(3)	(4)
1985	615	556	608
1986	666	586	661
1987	693	633	719
1988 -			
January	759	647	753
February	753	643	749
March	759	655	753

Contd | -



	(1)	(2)	(3)	(4)
April		759	664	763
May		764	690	771
June		770	694	782
July		808	713	795
August		808	713	800
September		814	719	806
October		-	723	-

## XXIII. MISCELLANEOUS.

	Nos.
1. Tourism, 1987	
(a) Tourist spots	55
(b) Tourists visiting Meghalaya	
(1) Indian	178858
(2) Foreign	194
2. Number of fair price shops, 1986-87	2553



