



GOVERNMENT OF MEGHALAYA

**DISTRICT LEVEL KEY STATISTICS  
MEGHALAYA  
1989-90**

Directorate of Economics, Statistics & Evaluation  
Government of Meghalaya



## FORE WORD

The Current issue of the District Level Key Statistics of Meghalaya, 1989-90 is the second in the series.

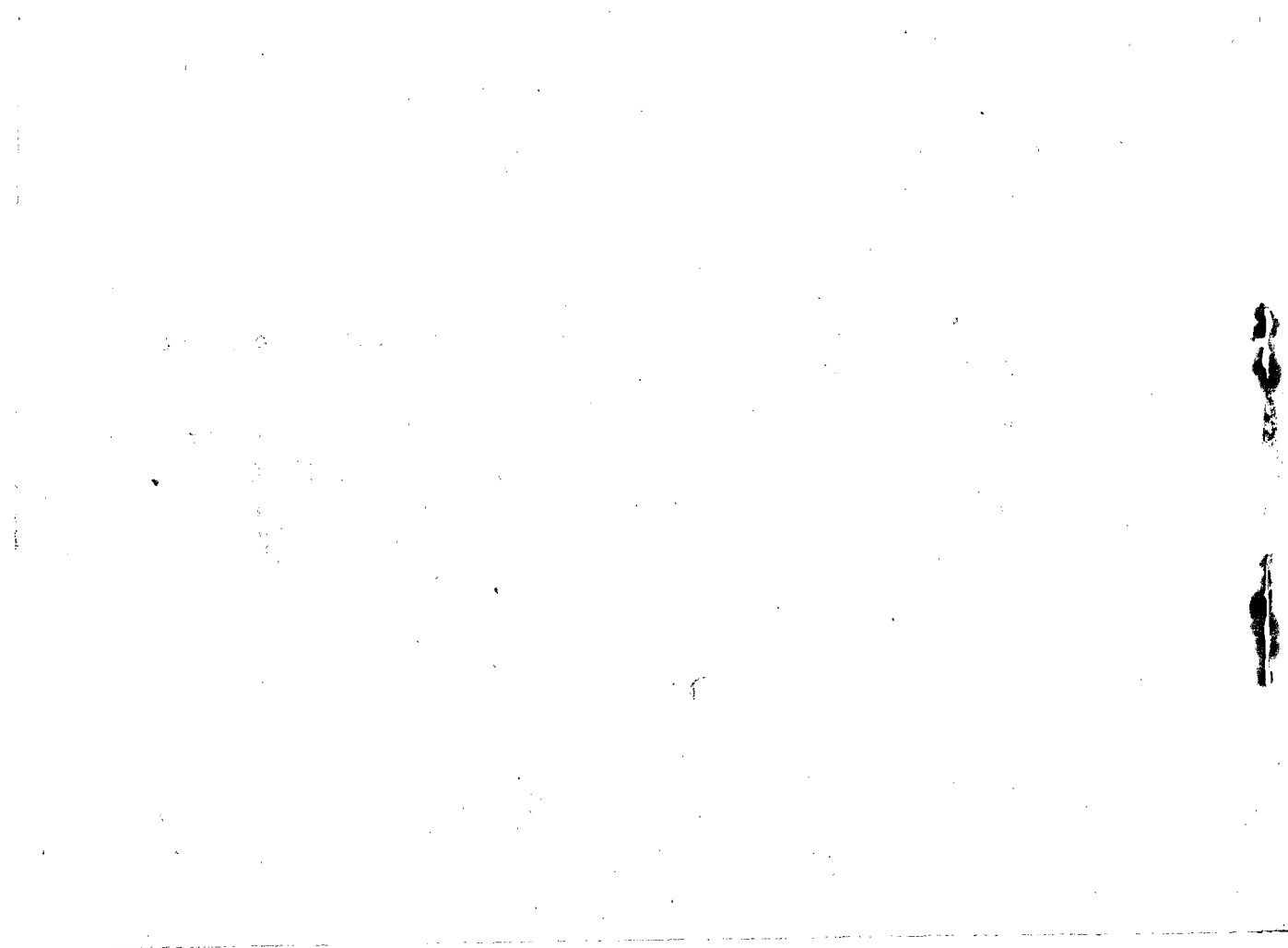
It seeks to give a synoptic view in brief by highlighting the current level of Progress made in different economic fields of the Districts. Sustained efforts are made in improving the coverage of this publication. The data presented in this publication have been drawn from various Government Departments/Offices/Statutory bodies, etc.

Suggestions for effecting improvement in the quality and coverage in its future issues are most welcome.

A. U. CHOUDHURY,

Director of Economics, Statistics and Evaluation,  
Government of Meghalaya, Shillong.

Dated Shillong,  
The 6th. Oct., 1990.



## DISTRICT LEVEL KEY STATISTICS, 1989-90

Items	Unit	Year	Jaintia Hills	East Khasi Hills	West Khasi Hills	East Garo Hills	West Garo Hills	Meghalaya
1	2	3	4	5	6	7	8	9
<b>I. AREA AND ADMINISTRATIVE UNITS—</b>								
1. Area ... ..	Sq. Kms	1981	3819	5196	5247	2603	5564	22429
2. Sub-Division (Other than District Headquarter).	Nos.	1989	2	2	2	1	3	10
3. Police Station ... ..	Nos.	1989	2	6	3	5	7	23
4. Police Outpost ... ..	Nos.	1989	5	12	5	3	6	31
5. Community Development Blocks.	Nos.	1989	4	9	4	4	9	30
6. Towns ... ..	Nos.	1981	1	7	1	1	2	12
7. Villages :--								
(a) Inhabited ... ..	Nos.	1981	404	1189	710	656	1943	4902
(b) Uninhabited ... ..	Nos.	1981	14	38	33	21	40	146
(c) House-holds ... '000	Nos.	1981	28	100	29	27	72	256

Item	Unit	Year	Jaintia Hills	East Khasi Hills	West Khasi Hills	East Garo Hills	West Garo Hills	Meghalaya
1	2	3	4	5	6	7	8	9
<b>II. POPULATION—</b>		'000 Nos.	1981					
A.1. Total	...	...	156	511	162	137	370	1336
2. Male	...	...	79	263	83	71	188	684
3. Female	...	...	77	248	79	66	182	652
4. Rural	...	...	143	331	158	133	330	1095
5. Urban	...	...	13	180	4	4	40	241
6. Scheduled Tribes	...	...	149	374	157	124	272	1076
7. Scheduled Castes	...	Nos.	47	1480	...	114	3851	5492
<b>B. RELIGION-WISE POPULATION—</b>		Nos.	1981					
1. Christians	...	...	87478	248540	120443	94396	151997	702854
2. Hindus	...	...	9362	129355	5480	11340	85294	240831
3. Muslims	...	...	176	6707	120	1094	33337	41434
4. Khasi	...	...	1891	114939	31606	...	1	148437
5. Niamtre	...	...	7822	81	...	...	...	7903
6. Pnar	...	...	8391	1011	...	...	...	9402
7. Shnong	...	...	40768	6	...	...	...	46774
8. Songsarek	...	...	...	296	3399	29029	94477	127201
9. Others	...	...	446	9617	309	413	4677	15453
10. Religion not stated	...	...	68	862	228	278	94	1530

Item	Unit	Year	Jaintia Hills	East Khasi Hills	West Khasi Hills	East Garo Hills	West Garo Hills	Meghalaya
1	2	3	4	5	6	7	8	9
<b>C. LITERACY—</b>								
	P. C.	1981						
1. Total ... ..	..		24.51	43.73	31.97	33.51	25.91	34.08
2. Male ... ..	...		24.63	46.96	34.08	39.01	32.04	37.89
3. Female ... ..	...		24.33	40.30	29.75	27.66	19.55	30.08
4. Rural ... ..	...		20.77	31.95	31.47	33.05	21.69	27.45
5. Urban ... ..	...		66.91	65.25	52.35	47.41	61.26	64.12
<b>D. Working Population</b>								
	'000 Nos.	1981						
<b>(a) MAIN WORKERS</b>								
i. Cultivators .. ..	..		50.6	74.6	72.0	44.6	121.2	363.0
ii. Agricultural Labourers ... ..	...		8.7	24.7	4.2	4.0	16.3	57.9
iii. Household Industry ... ..	...		0.5	2.8	0.1	0.3	1.1	4.8
iv. Other Workers ... ..	...		16.5	105.9	4.6	5.9	21.6	154.5
<b>(b) Marginal Workers</b>								
	...		0.9	4.8	1.9	7.5	18.1	33.2
<b>(c) Non-Workers</b>								
	...		79.2	298.6	78.8	74.3	191.5	722.4
<b>III. AGRICULTURE</b>								
<b>A. Land Utilisation (P)</b>								
	Hectares	1987-88						
1. Net Area Sown ... ..	...		32175	40055	23939	26565	73266	196000
2. Area Sown more than once ... ..	...		164	16745	3415	5143	19057	38524
3. Total Cropped Area ... ..	...		32339	59800	27354	31708	92323	234524
4. Net Irrigated Area ... ..	...		895	6000	3370	1780	4209	16254

Items	Unit	Year	Jaintia Hills	East Khasi Hills	West Khasi Hills	East Garo Hills	West Garo Hills	Meghalaya
1	2	3	4	5	6	7	8	9
<b>B. AREA UNDER ***</b>	Hectares	1988-89						
(a) Rice ... ..			18593	16055	8627	18256	48147	169700
(b) Wheat ... ..			...	...	7	45	4561	4600
(c) Rabi and Other pulses ... ..			...	250	40	116	1335	1700
(d) Sugar Cane ... ..			...	...	25	22	52	100
(e) Jute ... ..			...	...	12	280	4676	5000
(f) Rape and Mustard ... ..			...	150	30	781	5712	6700
(g) Maize ... ..			3900	3504	4720	1000	4767	17900
(h) Potato ... ..			650	10228	6428	75	336	17700
(i) Cotton ... ..			...	...	16	2400	4529	6900
(j) Ginger ... ..			85	550	80	3345	2196	6300
<b>C. PRODUCTION ***</b>	Tonnes	1988-89						
(a) Rice ... ..			19581	15756	9351	17985	42898	105600
(b) Wheat ... ..			...	...	6	61	6659	6700
(c) Rabi and Other pulses ... ..			...	137	21	69	1093	1300
(d) Sugar Cane ... ..			...	...	55	78	162	300
(e) Jute* ... ..			...	...	83	2778	34393	37300
(f) Rape and Mustard ... ..			...	105	15	492	2782	3400
(g) Maize ... ..			4000	6139	3858	1400	5243	20600
(h) Potato ... ..			3900	40975	23035	591	2596	71100
(i) Cotton** ... ..			...	...	47	1412	2741	4200
(j) Ginger ... ..			374	3492	320	14551	10218	29000

\*—Production in bales of 180 Kgs. per bale.

\*\*—Production in bales of 170 Kgs. per bale.

\*\*\*—District total do not tally owing to rounding up of figures at State level.



Items	Unit	Year	Jaintia Hills	East Khasi Hills	West Khasi Hills	East Garo Hills	West Garo Hills	Meghalaya
1	2	3	4	5	6	7	8	9
<b>D. CONSUMPTION OF FERTILIZERS:</b>								
	Metric tonnes	1987-88						
(a) Nitrogen ... ..			65	900	540	120	136	1761
(b) Phosphate ... ..			28	600	520	60	103	1311
(c) Potash... ..			13	100	60	24	32	229
<b>E. JHUM CULTIVATION:</b>								
	Nos.	1981						
1. Villages Practising Jhum Cultivation.			146	333	185	410	1383	2457
2. Households Practising Jhum Cultivation.			3251	7029	3629	8935	28877	(1) 51720
3. No. of persons engaged in Jhum Cultivation.			14902	35540	19207	46512	141786	(1) 256947
<b>IV. LIVESTOCK &amp; VETERINARY:</b>								
A. Livestock Census—	'000 Nos.	1982						
1. Total Livestock ... ..			147	258	215	111	286	1017
2. Total Poultry ... ..			140	363	213	211	492	1419

(1) Figures are according to Census Reports Special Paper of 1983.



Items	Unit	Year	Jaintia Hills	East Khasi Hills	West Khasi Hills	East Garo Hills	West Garo Hills	Meghalaya
1	2	3	4	5	6	7	8	9
<b>B. OUTTURN OF FOREST PRODUCTS:</b>			1986-87(P)					
1. Timber ... ..	M <sup>3</sup>		...	678	...	520	...	1198
2. Firewood ... ..	MT		...	77	...	262	...	339
<b>VII. SERICULTURE:</b>			Nos. 1988-89					
1. Sericulture Villages ... ..			24	117	56	65	1550	1812
2. Families engaged in Sericulture.			2039	2243	2448	2564	3044	12338
3. Sericultural Farms ... ..			2	2	1	1	3	9
4. Eri Seed Grainages ... ..			1	1	1	1	1	5
5. Muga Seed Farms ... ..			...	...	1	1	1	3
6. Eri Concentration Centre			9	11	3	4	7	34
<b>VIII. CO-OPERATION:</b>			Nos. 1986-87(P)					
1. Societies ... ..			66	265	126	52	137	646
2. Membership ... ..			11080	25338	37220	15613	26614	115865
3. Working Capital (Rs. in lakhs)			201	899	289	90	138	1617
4. Share Capital ... ..			33	339	49	22	61	504
<b>IX. POWER:</b>			Nos. 1988-89					
1. No. of Villages electrified			231	656	222	311	517	1937
2. No. of Towns electrified			1	7	1	2	1	12

Items	Unit	Year	Jaintia Hills	East Khasi Hills	West Khasi Hills	East Garo Hills	West Garo Hills	Meghalaya
1	2	3	4	5	6	7	8	9
<b>X. INDUSTRY:</b>	Nos.	1988-89						
A. (1) Registered Factories under Factory Act.			...	49	...	3	6	53
(2) Employees			...	1879	...	224	116	2219
B. (1) Small Scale Industries registered with the Directorate of Industries.			159	692	131	85	164	1231
(2) Employees			599	5075	653	389	742	7438
C. Industrial Estates			...	1	...	1	1	3
<b>XI. No. OF ENTERPRISES:</b>		Economic Census 1990(P)						
1. Total			6576	22733	5821	4439	10404	49973
(a) Agricultural			139	1482	180	316	710	2827
(1) Rural			122	1176	169	267	661	2395
(2) Urban			17	306	11	49	49	432
(b) Non-Agricultural			6437	21251	5641	4123	9694	47146
(1) Rural			5033	9500	4739	3458	7130	29860
(2) Urban			1404	11751	902	665	2564	17286

Items	Unit	Year	Jaintia Hills	East Khasi Hills	West Khasi Hills	East Garo Hills	West Garo Hills	Meghalaya
1	2	3	4	5	6	7	8	9
2. Own account Enterprises ..			2863	11320	2582	1795	4413	22973
3. Establishment (with one or more hired workers).			3713	11413	3239	2644	5991	27000
4. Persons usually working in the Enterprises. Total (including unpaid and Hired workers).			21135	89017	14967	11653	29235	166007
<b>XII. LABOUR &amp; EMPLOYMENT</b>	Nos.	1989						
1. Employment exchange ..			1	2	1	2	1	7
2. No of applicants in live Register.			3195	14326	1212	2821	1887	23441
3. Educated Unemployed ...			1135	7687	480	388	1068	10750
<b>A. Employment in Public Sector</b>	Nos.	1989-90						
1. Central Govt. ...			6	12088		12	398	12504
2. State Govt. ...			4836	15947	2202	1563	7868	32416
3. Central quasi Govt. ...			82	6496	244	58	313	7193
4. State quasi Govt. ...			486	6344	160	220	646	7856
5. Local Bodies ...			318	1247			355	2120
<b>B. Private Sector</b>			339	3549	273	76	330	4567

Items	Unit	Year	Jaintia Hills	East Khasi Hills	West Khasi Hills	East Garo Hills	West Garo Hills	Meghalaya
1	2	3	4	5	6	7	8	9
<b>XIII. ROADS:</b>	<b>Kms.</b>	<b>1987-88</b>						
1. Surfaced .. ...	..		456.8	846.6	204.0	308.0	480.0	2295.4
2. Unsurfaced .. ...	..		1609.3	964.8	524.0	249.4	756.4	3103.9
3. Length of National Highways.			122.5	210.2	...	...	127.3	480.0
4. Length of State Highways			137.5	235.5	156.7	199.0	188.0	916.7
5. Major District Roads ..	..		175.5	273.3	155.1	177.1	291.1	1072.1
6. Other District Roads ..	..		630.5	1092.4	416.2	181.3	630.0	2950.4
7. Registered Vehicles	Nos.	31st March, 1989 (P)						
(a) Private .. ...	..		2445	18163	299	681	2167	23755
(b) Government .. ...	..		126	2656	45	51	428	3386
<b>XIV. COMMUNICATIONS:</b>	<b>Nos</b>	<b>1989-90</b>						
1. Sub-post Office .. ...	..		4	38	2	7	9	60
2. Branch Post Office .. ...	..		67	118	80	45	84	394
3. Telegraph Offices .. ...	..		4	15	10	7	8	44
4. Public Call Office .. ...	..		9	21	15	10	20	75

Items	Unit	Year	Jaintia Hills	East Khasi Hills	West Khasi Hills	East Garo Hills	West Garo Hills	Meghalaya
1	2	3	4	5	6	7	8	9
<b>XV. HEALTH:</b>	Nos.	1989-90						
1. Govt. Hospitals ...	...		1	4	1	1	1	8
2. Govt. Dispensaries ...	...		4	8	1	3	8	24
3. Sub-Centres ...	...		43	57	46	43	58	247
4. Primary Health Centres ...	...		10	17	7	8	14	56
5. Bed in Govt. Hospitals and Primary Health Centres.	...		123	1169	88	116	218	1714
6. Family Welfare Clinic Centres	...		4	8	3	4	8	27
<b>XVI. EDUCATION:</b>		1987-88						
A. Primary/Junior Basic School								
1. Institutions ...	Nos.		414	1048	897	538	1235	4132
2. Enrolment:	000Nos.							
(i) Boys ...	...		884	3868	2521	1615	3134	12022
(ii) Girls ...	...		1203	4061	1752	1504	2814	11334
(iii) Total ...	...		2087	7929	4273	3119	5948	23356
3. Teachers	Nos.							
(i) Trained ...	...		420	943	497	333	722	2920
(ii) Untrained ...	...		487	1165	626	441	877	3596
(iii) Total ...	...		907	2108	1123	779	1599	6516

Items	Unit	Year	Jaintia Hills	East Khasi Hills	West Khasi Hills	East Garo Hills	West Garo Hills	Meghalaya
1	2	3	4	5	6	7	8	9
<b>B. MIDDLE &amp; SENIOR BASIC SCHOOL—</b>		<b>1987-88</b>						
1. Institutions	Nos.		79	246	87	80	221	713
2. Enrolment	'000Nos.							
(i) Boys			1.64	6.82	2.25	4.23	11.93	26.93
(ii) Girls			2.40	6.87	1.90	2.50	9.87	23.54
(iii) Total			4.04	13.75	4.15	6.73	21.80	50.47
3. Teachers	Nos.							
(i) Trained			59	261	63	88	77	548
(ii) Untrained			223	830	326	240	726	2345
(iii) Total			282	1091	389	328	803	2893
<b>G. HIGH/HIGHER SECONDARY SCHOOL—</b>		<b>1987-88</b>						
1. Institutions	Nos.		26	111	30	37	112	316
2. Enrolment	'000Nos.							
(i) Boys			2.19	16.16	1.93	3.88	8.86	33.02
(ii) Girls			3.02	18.06	1.97	2.62	6.55	32.22
(iii) Total			5.21	34.22	3.90	6.50	15.41	65.24



Items	Unit	Year	Jaintia Hills	East Khasi Hills	West Khasi Hills	East Garo Hills	West Garo Hills	Meghalaya
1	2	3	4	5	6	7	8	9
<b>3. Teachers—</b>								
(i) Trained	.. Nos.		73	552	56	90	200	971
(ii) Untrained	..		189	392	230	267	438	2022
(iii) Total	..		262	1450	286	357	638	2993
<b>D. COLLEGE FOR GENERAL EDUCATION—</b>			1987-88					
1. Institutions	.. Nos.		1	15	3	1	3	23
2. Enrolment	.. '000Nos.							
(i) Boys	..		0.37	7.45	8.09	0.28	0.80	8.99
(ii) Girls	..		0.45	4.80	0.07	0.14	0.66	6.12
(iii) Total	..		0.82	12.25	0.16	0.42	1.46	15.11
<b>E. UNIVERSITY</b>			1987-88					
1. Institutions	.. Nos.		...	1	...	...	...	1
2. Enrolment	.. '000Nos.							
(i) Boys	..		...	0.44	...	...	...	0.44
(ii) Girls	..		...	0.41	...	...	...	0.41
(iii) Total	..		...	0.85	...	...	...	0.85

Items	Unit	Year	Jaintia Hills	East Khasi Hills	West Khasi Hills	East Garo Hills	West Meghalaya Garo Hills		
1	2	3	4	5	6	7	8	9	
<b>XVII. BANKING :</b>			March, 1990(P)						
1. Bank Offices	NoS.		19	71	17	11	26	144	
2. Deposit	Rs. in lakhs		1703	22610	581	423	1956	27273	
3. Credit	"		414	4978	388	262	681	6723	
<b>XVIII. RURAL DEVELOPMENT PROGRAMMES :</b>			1988-89						
<b>A. National Rural Employment Programme—</b>									
(i) Employment generated	lakhman days		0.16	1.19	0.23	0.24	0.46	2.28	
<b>B. Rural Landless Employment Guarantee programme—</b>									
(i) Employment generated	lakhman days		0.43	0.61	0.20	0.03	0.59	2.06	
<b>XIX. MISCELLANEOUS:</b>			Nos						
1. Cinema Houses		1988	1	6	...	1	1	9	
2. Tourist Spots		1989	7	28	9	4	8	56	
3. Newspapers		1988-89	6	34	...	...	6	46	
4. Fair Price Shops		1988-89	239	842	545	296	897	2819	

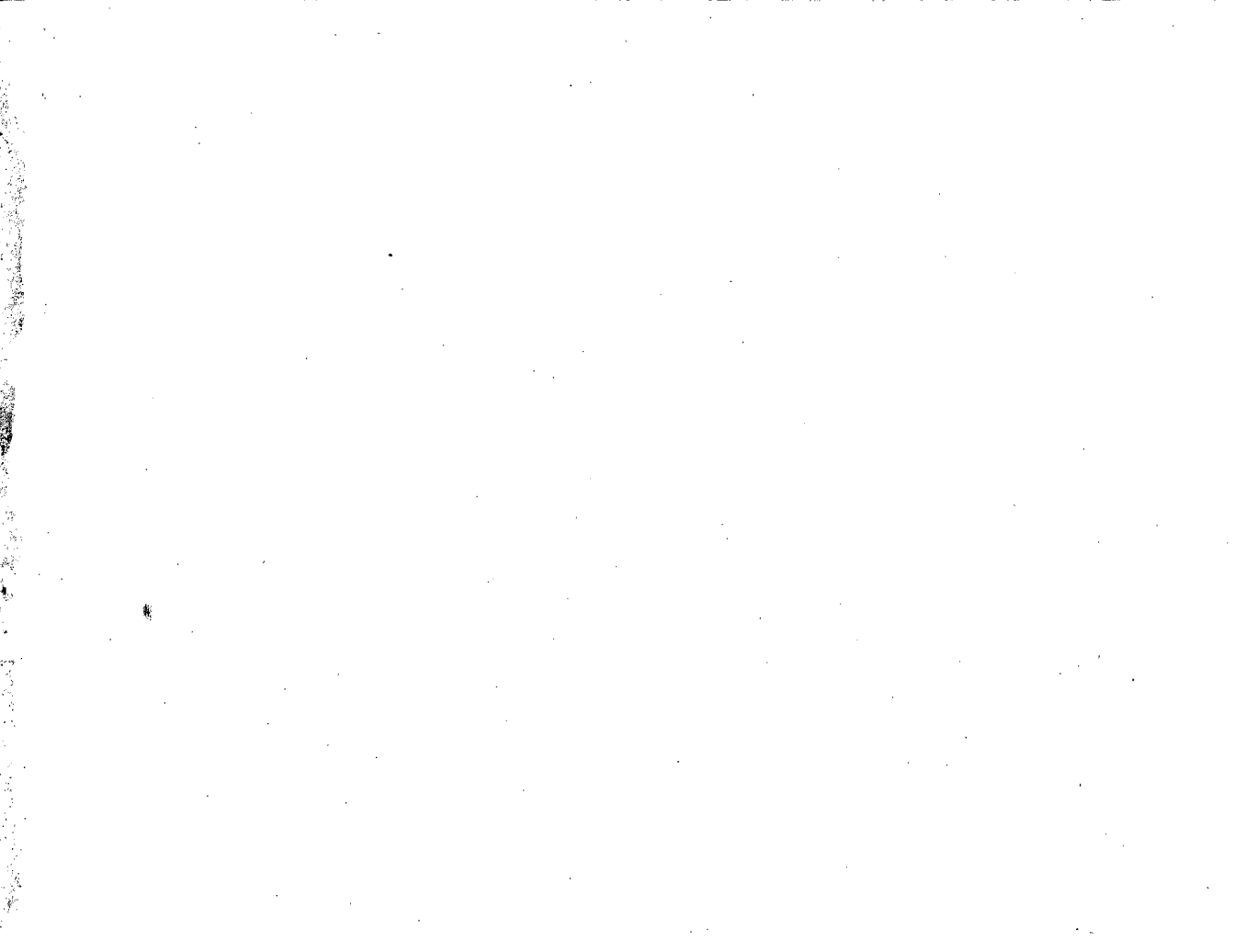
## District Socio-Economic Indicators 1989-90

Items	Units	Year	Jaintia Hills	East Khasi Hills	West Khasi Hills	East Garo Hills	West Garo Hills	Meghalaya
1	2	3	4	5	6	7	8	9
1. Density of Population	Per Sq. Km.	1981	41	98	31	52	66	60
2. Sex Ratio	... Females	..	978	945	949	941	963	954
	Per '000 Males							
3. Percentage of :	P. C.	1981						
(i) Rural Population	...		91.74	64.65	97.60	96.86	89.34	81.95
(ii) Scheduled Tribes Population.	...		95.08	73.15	97.16	91.15	73.56	80.58
(iii) Scheduled Castes Population.	...		0.03	0.29	...	0.08	1.04	0.41
(iv) Decadal growth rate of Population.	...	1971-81	37.72	34.35	45.73	32.96	21.70	32.04
(v) LITERACY	P. C.	1981						
(a) Total	...		24.51	43.73	31.97	33.51	25.91	34.08
(b) Rural	...		20.77	31.95	31.47	33.05	21.69	27.46
(c) Urban	...		66.01	65.25	52.35	47.41	61.27	64.92
(vi) Workers	...		48.80	40.67	50.08	40.09	43.32	43.43

Items	Unit	Year	Jaintia Hills	East Khasi Hills	West Khasi Hills	East Garo Hills	West Garo Hills	Meghalaya
1	2	3	4	5	6	7	8	9
<b>4. PERCENTAGE TO TOTAL WORKERS</b>	<b>P. C.</b>	<b>1981</b>						
(i) Cultivators ...			66.33	35.84	88.92	81.57	75.65	62.61
(ii) Agricultural Labourers			11.47	11.88	5.22	7.66	19.18	9.97
(iii) Workers in Manufacturing household Industry.			0.62	1.36	0.15	0.55	0.70	0.83
5. Population Served per Govt. Hospital & Dispensary.	'00 Nos.	1989-90	417	556	1133	441	490	537
6. Population Served per P. H. C.	'00 Nos.	"	209	392	324	221	315	307
7. Population Served per Sub-Centre.	'00 Nos.	"	49	117	49	41	76	70
8. Beds per '000' Population	Nos.	"	0.59	1.75	0.39	0.66	0.49	1.00
<b>9. EMPLOYEE POPULATION RATIO:</b>								
(a) Meghalaya Government	Nos.	1989-90	1:43	1:42	1:103	1:113	1:56	1:53
(b) Public Service ...	Nos.	"	1:35	1:16	1:87	1:95	1:46	1:28
10. Pupil-Teacher Ratio	Nos.	1987-88						
(a) Primary			23	38	38	40	37	36
(b) Middle			14	13	11	21	27	17
(c) High/Higher Secondary			20	24	14	18	24	22

Items	Unit	Year	Jaintia Hills	East Khasi Hills	West Khasi Hills	East Garo Hills	West Garo Hills	Meghalaya
1	2	3	4	5	6	7	8	9
11. (a) Primary School	... Nos.	1987-88	2.05	1.62	4.11	3.14	2.85	2.47
	Per							
(b) Middle School ...	... ,000	„	0.39	0.38	0.40	0.47	0.51	0.43
(c) High School ...	... Pop	„	0.13	0.17	0.14	0.22	0.26	0.19
12. Cultivated Area to total Area.	P. C.	1987-88(P)	8.47	9.78	5.21	12.18	16.59	10.46
13. Area sown more than once to net area sown.	P. C.	1987-88(P)	0.51	26.83	14.27	19.36	26.01	19.66
14. Net Area sown per capita	Hectares.	1987-88(P)	0.21	0.08	0.15	0.19	0.20	0.15
15. Average yield rate per Hectare—	Kgs.	1988-89						
(a) Rice	...		1053	981	1084	985	891	983
(b) Potato	...		6000	4006	3583	7880	7726	4017
(c) Maize	...		1026	1752	817	1400	1109	1151
(d) Rape and Mustard	...		...	700	500	630	487	507
(e) Jute	...		...	...	1245	1786	1324	1343
16. Percentage of Villages Electrified to total villages.	P. C.	1988-89	57.18	55.17	31.27	47.41	26.61	39.51

Items	Unit	Year	Jaintia Hills	East Khasi Hills	West Khasi Hills	East Garo Hills	West Garo Hills	Meghalaya
1	2	3	4	5	6	7	8	9
17. Co-operative Societies served per lakh of population.	Nos.	1986-87(P)	35	43	62	32	33	41
18. Post Office Per lakh of population.	Nos.	1989-90	34	23	36	29	21	26
19. Length of P.W.D., Roads per 100 Sq. Km. of area.	Kms.	1987-88	28	35	14	21	22	24
20. P.W.D., Road length Per lakh of Population.	Kms.	1987-88	511	272	321	316	280	314
21. Bank Offices Per lakh of Population	Nos.	March, 1990	9	11	8	6	6	8
22. Population served per Bank Office.	,,	,,	10983	9395	13331	16039	16370	11944
23. Per capita deposit	Rs.	,,	816	3390	256	240	443	1586
24. Per capita advance	,,	,,	198	746	171	148	154	391
25. Credit Deposit	P. C.	,,	24.34	22.02	66.78	61.94	34.82	24.65



Printed at the Directorate of Printing and Stationery (Press Wing)  
Meghalaya, Shillong.