

**BIO- RESOURCES DEVELOPMENT CENTRE  
(BRDC)  
SHILLONG**

**GENERAL INFORMATION ABOUT THE CENTRE**

1. Name : Bio-Resources Development Centre (BRDC).
2. Address : Opp. Indo Danish Project, 5 ½ Mile, Upper Shillong, Shillong – 793 009
3. Nodal Officer : Member-Secretary, BRDC, Shillong. C/O. SCSTE, Meghalaya, Lower Lachumiere, Shillong-793001  
Ph. No. - (0364) 2505511 (off.), (0364) 2521828 (Res.)
4. Constitution : Constituted by Government of Meghalaya and registered under Societies Registration Act, 1983.
5. Mission : To ensure meaningful conservation and sustainable utilization of the bio-resources of the State.
6. Function : To undertake research, field experimentation and Development of value added products/technologies for conservation and sustainable utilization of bio-resources of the State.
7. Head : Chairman
8. Functional Authority : Chairman
9. Chief Executive Officer : Scientist-in-Charge
10. Type of Organisation : Autonomous registered society of the State Government
11. Composition of the Organisation : (i) [Governing Council](#) (ii) [Centre](#).
12. Organisational Structure : [Annexure I](#)
13. Composition of the Governing Council : [Annexure II](#)
14. Manpower Structure : [Annexure III](#)
15. About the Centre : The Centre is manned by a core-staff comprising of scientific, technical and administrative personnel headed by a Scientist-in-Charge. The Centre identifies, formulates, executes/co-ordinates and follows-up projects on various aspects of conservation and sustainable utilisation of bio-resources of the State. Besides the core-staff, a number of project staff are engaged by the Centre from time to time for execution of various projects of the Centre.

**15. Controlling Authority  
of the State Govt.**

: Planning Department, Govt. of Meghalaya

**16. Funding**

: The Centre is funded by Planning Department(S&T), Govt. of Meghalaya and Department of Biotechnology (DBT), Govt. of India.

## OBJECTIVES

- \* Genetic improvement/up-gradation and multiplication of horticultural and medicinal plants.
- \* Improvement and health care of livestock.
- \* Germplasm collection of non-mulberry silk moths and their wild relatives for genetic enhancement.
- \* Development of human resource in biotechnology.
- \* Collection, conservation, breeding, improvement and multiplication of orchids.
- \* Multiplication and marketing of ornamental plants.
- \* Ex-situ conservation, improvement, agro-technologies and sustainable use of medicinal plants.
- \* Development of bio-informatics system.
- \* Providing opportunity for training in bio-technology relevant to the activities of the Centre.

## PROGRAMMES

- Horticultural Resources Development Programme.
- Medicinal plant Resources Development Programme.
- Human Resources Development Programme.

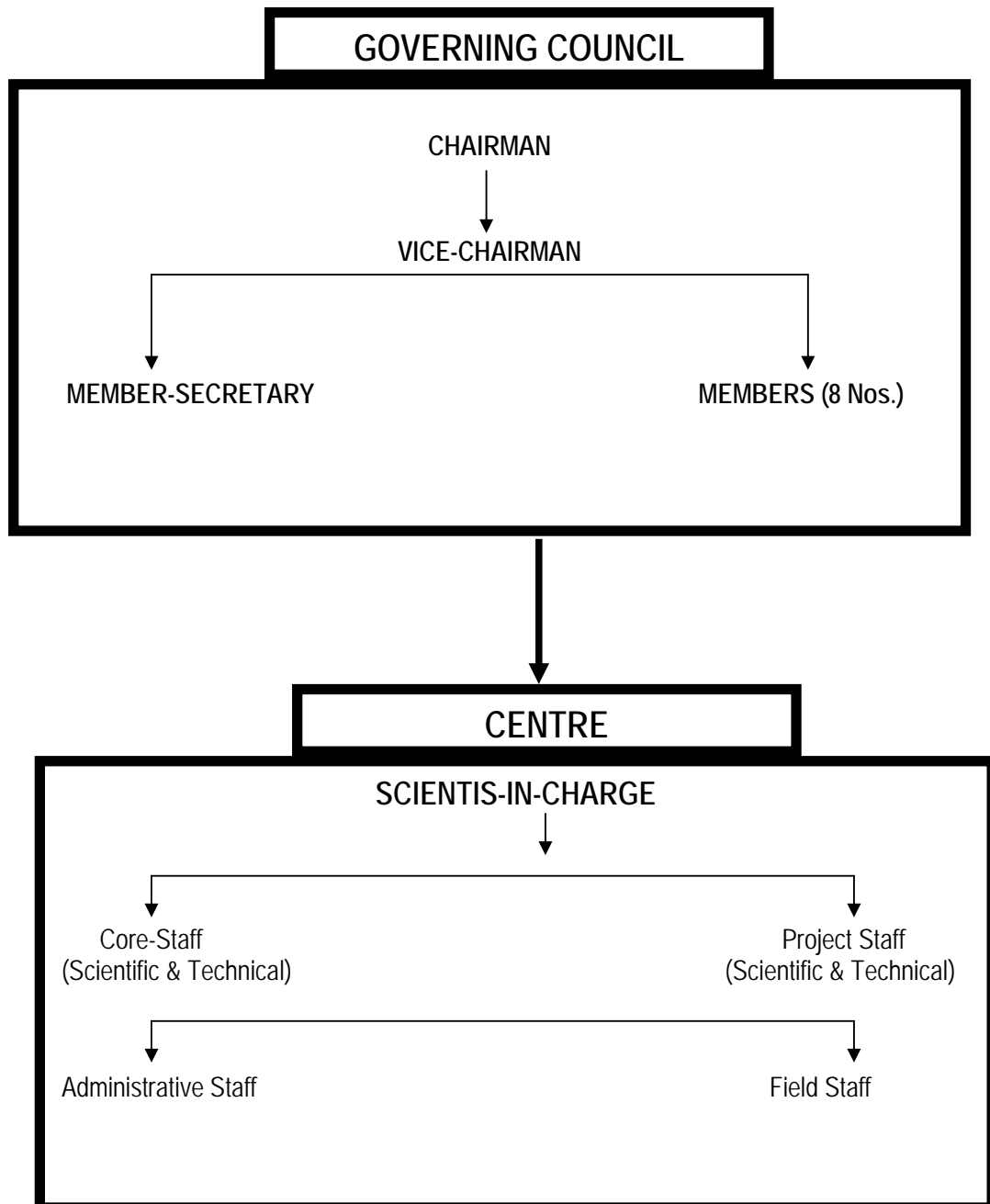
## CURRENT PROJECTS

The Centre is currently taking-up a project sponsored by Department of Bio-technology (DBT), Ministry of Science & Technology, Govt. of India titled- "Conservation & Sustainable Utilization of Bio-Resources of Meghalaya at BRDC

**BIO-RESOURCES DEVELOPMENT CENTRE  
(BRDC)  
SHILLONG**

ANNEXURE-I

**ORGANISATIONAL STRUCTURE**



**BIO-RESOURCES DEVELOPMENT CENTRE  
(BRDC)  
SHILLONG**

ANNEXURE- II

**COMPOSITION OF THE GOVERNING COUNCIL**

- |   |   |                                     |
|---|---|-------------------------------------|
| 1. Chief Secretary, Meghalaya   | - | Chairman                            |
| 2. Principal Secretary/ Commissioner & Secretary,<br>Planning (S&T), Meghalaya.         | - | Vice-Chairman                       |
| 3. Principal Secretary/ Commissioner & Secretary/<br>Secretary, Forest, Meghalaya.      | - | Member                              |
| 4. Principal Secretary/ Commissioner & Secretary/<br>Secretary, Agriculture, Meghalaya. | - | Member                              |
| 5. Representative of Department of Biotechnology,<br>Govt. of India.                    | - | Member                              |
| 6. Representative of Department of Science &<br>Technology, Govt. of India.             | - | Member                              |
| 7. Scientist-in-Charge, Botanical Survey of India,<br>Shillong.                         | - | Member                              |
| 8. Scientist-in-Charge, Zoological Survey of India,<br>Shillong.                        | - | Member                              |
| 9. Dean, Life Science, NEHU, Shillong   | - | Member                              |
| 10. Director, ICAR, NEH Complex, Umiam,<br>Meghalaya.                                   | - | Member                              |
| 11. Member- Secretary   | - | Project Director, S&T, Meghalaya    |
| 12. Member-Assistant Secretary.   | - | Member-Secretary, SCSTE, Meghalaya. |

**BIO- RESOURCES DEVELOPMENT CENTRE  
(BRDC)  
SHILLONG**

Annexure III

**MANPOWER STRUCTURE**

